

DELHI TRANSCO LTD.

STATE LOAD DISPATCH CENTER

PROGRESS REPORT

OCTOBER 2016

S. No.	CONTENTS	Page No.
1.	Salient Features of Delhi Power System	3
2.	Performance of Generating Stations within Delhi	4
3.	Details of Outage of Generating Stations within Delhi	5-16
4.	Allocation of Power to Delhi from unallocated quota of central sector	17-18
5.	Allocation of Power to Discoms	19
6.	Power Availability Demand Position of Delhi at the time of occurrence of Peak Demand	20
7.	Power Availability Demand Position of Delhi at the time of occurrence of Maximum Un-Restricted Demand	21
8.	Source wise scheduled drawl from grid and Availability within Delhi	22-25
9.	Shedding Details	26-30
10.	Load Curve for the Day of Peak Demand	31
11.	Load Curve for the day of occurrence of Maximum Un-Restricted Demand	32
12.	Load Curve for the day of Maximum Energy Consumed	33
13.	Load Curve for the day of Maximum Un-Restricted Energy Demand	34
14.	Load Duration Curve	35
15.	Frequency Analysis	36
16.	Voltage Profile for significant 220kV Sub-Stations	37
17.	Voltage Profile for significant 400kV Sub-Stations	38-39
18.	Details of Capacitors Installations in Delhi	40-45
19.	Tripping Details of 400/220 KV System in Delhi Power System	46-48
20.	Details of Under frequency Relay operations in Delhi Power System	49

Sr. No.	Features	OCT. 2015	OCT 2016
1	Effective Generation Capacity within Delhi in MW		
	Rajghat Power House	135	135
	Gas Turbine	270	270
	Pragati Power Corporation Ltd.	330	330
	Badapur Thermal Power Station	705	705
	Rithala GT	108	108
	Bawana	1372	1372
	TOWMCL	16	16
	Total	2936	2936
2	Maximum Unrestricted Demand (MW)	4481	5442
	Date	09.10.2015	03.10.2016
	Time	16.03.17	22.50.40
3	Peak Demand met (MW)	4481	5442
	Date	09.10.2015	03.10.2016
	Time	16.03.17	22.50.40
4	Peak Availability (MW)	4297	5330
5	Shortage (-) / Surplus (+) in MW	(-)184	(-)112
6	Percentage Shortage (-) / Surplus (+)	(-) 4.11	(-) 2.06
7	Maximum Energy Consume in a day (Mus)	95.243	112.223
8	Energy Consumed during the month	2531.227	2619.599
9	Load Shedding in Mus		
A)	Due to Grid Restrictions		
i)	Under Frequency Relay Operations	0.011	0.690
ii)	Manual Load shedding from DTL S/Stns.	0.000	0.000
iii)	Load Shedding due to low frequency / Low Voltage / TTC/ATC Violation		
	NDPL	0.233	0.026
	BRPL	1.195	0.111
	BYPL	0.036	0.009
	NDMC	0.000	0.000
	MES	0.000	0.000
iv)	Due to transmission Constraints in Central Sector	0.000	0.000
	Total due to Grid Restriction	1.475	0.836
B)	Due to Constraints in System in Mus		
	DTL	0.152	0.276
	NDPL	0.390	0.109
	BRPL	0.260	0.424
	BYPL	0.049	0.067
	NDMC	0.000	0.000
	MES	0.000	0.000
	Other Agencies	0.513	0.353
	Total	1.364	1.229
11	Grand Total in Mus	2.839	2.065

2. PERFORMANCE OF GENERATING STATIONS WITHIN DELHI DURING OCTOBER 2016

A) For the month of October 2016

All Figures in MUs

S. No	Stations	Gross Generation	Aux. Consumption	Net Generation	Availability (%)	Backing Down
1.	RPH	0.000	0.568	-0.568	0.000	0.000
2.	GT	58.279	1.560	56.719	83.92	106.985
3.	PPCL	117.612	2.762	114.850	72.30	57.844
4.	BTPS	24.828	2.463	22.365	75.75	173.361
5.	Rithala	0.000	0.062	-0.062	--	--
6.	Bawana	200.795	7.085	193.710	71.48	518.228
7.	Towmcl	13.271	1.959	11.312	--	--
	TOTAL	414.785	16.459	398.326	--	856.418

B) For the Year 2016-17 (Upto October 2016)

Power Station	Effective Capacity (MW)	Net Generation in MUs for Oct 2016	Availability (%) for Oct 2016	PLF (%) for Oct 2016	Cumulative Generation in MUs upto Oct 2016 for the year 2016-17	Cumulative Availability in % upto Oct 2016 for the year 2016-17	Cumulative PLF in % upto Oct 2016 for the year 2016-17
RPH	135	-0.568	-0.568	-0.58	-5.165	0.00	-0.84
GT	270	56.719	56.719	29.02	399.885	81.20	29.73
PPCL	330	114.850	114.850	48.01	1121.848	86.65	67.97
BTPS	705	22.365	22.365	38.61	1372.965	59.84	47.45
Rithala	108	-0.062	-0.062	--	-0.428	--	--
Bawana	1372	193.710	193.710	20.02	1089.111	68.65	16.02
Towmcl	16	11.312	11.312	--	77.196	--	--
TOTAL	2936	398.326	398.326	--	--	--	--

3 DETAILS OF OUTAGES OF GENERATING STNS. WITHIN DELHI W.E.F. APRIL 2016

RPH

Unit No	Capacity in MW	Outage		Synchronization		Reason of Outage
		Date	Time	Date	Time	
1	67.5	08.05.15	13.40	--	--	Tripped on boiler tube leakage

Unit No	Capacity in MW	Outage		Synchronization		Reason of Outage
		Date	Time	Date	Time	
2	67.5	21.05.15	10.20	--	--	Stopped due to shortage of coal

(B) Gas Turbine

Unit No	Capacity in MW	Outage		Synchronization		Reason of Outage
		Date	Time	Date	Time	
1	30	30.03.16	13:52	17.04.16	10:45	Machine tripped as heavy jerk observed in Control room and 160 MVA Tr-i& II tripped at 220 KV end due to tripping of Geeta Colony to Wazirabad ckt. Machine not taken on load due to less demand from SLDC.
		17.04.16	10:45	17.04.16	18:45	Station shut down to attend ACW line.
		17.04.16	18:45	29.04.16	19:15	Stopped due to low demand and high frequency
		13.5.16	16:10	13.5.16	17:47	Machine stopped to replace the broken drain valve in the inlet line of ACW.
		15.5.16	08:40	15.5.16	11:00	machine stopped to attend the leakage of oil from LV bushing of Unit Transformer. Machine cleared by Electrical division at 11:00 hrs but machine not taken on load due to low schedule from SLDC.
		15.5.16	11:00	16.5.16	10:54	Machine stopped as per SLDC message
		23.5.16	15:46	25.5.16	15:30	Machine tripped due to tripping of 160 MVA Tr-I& II. After that machine not taken on load due to less demand
		28.5.16	12:01	6.6.16	09:58	Stopped due to low demand and high frequency
		10.6.16	16:54	10.6.16	17:08	machine came on FSNL as both the ICT 160 MVA TX-I & II tripped due to jek in the system.
		13.6.16	07:11	13.6.16	09:00	Machine tripped as heavy jerk observed in the system as both 160 MVA Tx-I & II tripped.
		4.7.16	17:53	6.7.16	08:50	Stopped due to low demand and high frequency
		15.7.16	00:32	15.7.16	18:18	
		15.7.16	21:42	20.7.16	10:58	
		20.7.16	15:25	21.7.16	14:45	
		1.8.16	14:55	1.8.16	15:40	Machine stopped due to heavy smoke from Turbine auxiliary compartment.
		1.8.16	18:43	2.8.16	10:00	Tripped due to failure of communication link with I/O packs.
		2.8.16	10:00	3.8.16	10:15	Stopped due to low demand and high frequency
		4.8.16	12:30	4.8.16	14:08	Machine stopped to replace 11 KV CKT breaker due to low SF6 gas pressure.
		5.8.16	19:05	29.8.16	19:35	Stopped due to low demand and high frequency
		29.8.16	20:50	02.09.16	12.56	
04.10.16	00:25	04.10.16	16.05	Machine tripped as all communication failed . PCAA card failed.		
18.10.16	03.21	18.10.16	06.21	Machine came on FSNL and the following alarm appeared. Generator Control panel under voltage. Generator breaker tripped.		
18.10.16	13.45	31.10.16	23.59	Stopped due to low demand and high frequency		

Unit No	Capacity in MW	Outage		Synchronization		Reason of Outage
		Date	Time	Date	Time	
2	30	28.01.16	01:20	31.03.16	23:59	Stopped due to low demand and high frequency
		01.04.16	18:00	17.04.16	10:45	
		17.04.16	10:45	17.04.16	18:45	Station shut down to attend ACW line.
		17.04.16	18:45	5.5.16	15:11	Stopped due to low demand and high frequency
		5.5.16	15:57	5.5.16	16:40	Machine stopped due to problem in ACW line.
		7.5.16	17:02	7.5.16	17:52	Problem in battery charger
		19.5.16	00:02	19.5.16	01:03	T-Communication link inoperative
		23.5.16	15:46	23.5.16	15:50	Machine came on FSNL due to tripping of 160 MVA Tr-I & II.
		25.5.16	06:09	25.5.16	06:52	T-Communication link inoperative
		26.5.16	18:15	26.5.16	23:20	Machine tripped on high exhaust trip alarm.
		29.5.16	00:50	06.06.16	08.56	Stopped due to low demand and high frequency
		10.6.16	16:54	10.6.16	17:00	machine came on FSNL as both the ICT 160 MVA TX-I & II tripped due to jek in the system.
		13.6.16	07:11	13.6.16	13:40	Machine tripped as heavy jerk observed in the system as both 160 MVA Tx-I & II tripped.
		1.7.16	02:20	1.7.16	09:18	Loss of Field alarm appeared and machine tripped on Electrical Trouble Normal Shutdown.
		2.7.16	11:40	6.7.16	15:45	Stopped due to low demand and high frequency
		6.7.16	22:50	6.7.16	23:10	Loss of Field alarm appeared and machine tripped on Electrical Trouble Normal Shutdown.
		6.7.16	23:10	7.7.16	16:26	Stopped due to low demand and high frequency
		7.7.16	18:40	7.7.16	20:09	Loss of Field alarm appeared and machine tripped on Electrical Trouble Normal Shutdown.
		9.7.16	15:35	9.7.16	16:40	machine desynchroniz to check the Mvar problem.
		9.7.16	18:40	9.7.16	22:45	Loss of Field alarm appeared and machine tripped on Electrical Trouble Normal Shutdown.
		9.7.16	22:53	12.7.16	15:55	
		15.7.16	21:42	20.7.16	13:20	Stopped due to low demand and high frequency
		21.7.16	15:40	22.7.16	13:02	
		5.8.16	10:23	5.8.16	17:00	Machine tripped on Electrical trouble normal shut down.
5.8.16	17:00	12.8.16	12:58			
12.8.16	13:28	29.8.16	14:45	Stopped due to low demand and high frequency		
18.10.16	17:45	31.10.16	23:59			

Unit No	Capacity in MW	Outage		Synchronization		Reason of Outage
		Date	Time	Date	Time	
3	30	01.02.16	19:15	17.04.16	10:45	Stopped due to low demand and high frequency
		17.04.16	10:45	17.04.16	18:45	Station shut down to attend ACW line.
		17.04.16	18:45	12.05.16	12:00	Stopped due to low demand and high frequency
		12.5.16	12:00	19.5.16	23:09	Machine under shut down as permit taken by Electrical division to replace its 66 KV breaker.
		19.5.16	23:09	20.5.16	20:52	Machine available but not taken on load due to less schedule from SLDC
		20.5.16	23:58	06.06.16	15:40	
		6.6.16	18:06	9.6.16	15:50	Stopped due to low demand and high frequency
		9.6.16	18:46	30.6.16	14:30	
		30.6.16	14:40	30.6.16	16:20	Machine tripped due 'S' communication link inoperative.
		30.6.16	17:19	30.6.16	18:05	machine tripped on false alarm in Turbine or Accessories Area.
		01.07.16	01:00	31.10.16	23:59	Stopped due to low demand and high frequency

Unit No	Capacity in MW	Outage		Synchronization		Reason of Outage
		Date	Time	Date	Time	
4	30	29.01.16	14:00	17.04.16	10:45	Stopped due to low demand and high frequency
		17.04.16	10:45	17.04.16	18:45	Station shut down to attend ACW line.
		17.04.16	18:45	16.05.16	15:04	Stopped due to low demand and high frequency
		16.5.16	18:04	18.5.16	16:12	Machine stopped due to low schedule from SLDC
		21.5.16	16:05	21.5.16	17:57	supply of Computer failed.
		23.5.16	15:46	24.5.16	15:25	Machine tripped due to tripping of 160 MVA Tr-I& II. After that machine nottaken on load due to less demand
		24.5.16	16:27	6.6.16	11.12	Stopped due to low demand and high frequency
		6.6.16	20:10	7.6.16	10:34	
		10.6.16	16:54	10.6.16	17:08	machine came on FSNL as both the ICT 160 MVA TX-I & II tripped due to jek in the system.
		10.6.16	18:32	13.6.16	12:55	Stopped due to low demand and high frequency
		13.6.16	22:38	20.6.16	08:33	
		20.6.16	16:30	24.6.16	12:14	
		24.6.16	17:45	30.6.16	10:07	
		30.6.16	19:00	30.6.16	19:55	Machine tripped on over temperature alarm
		2.7.16	08:48	8.7.16	10:51	Stopped due to low demand and high frequency
		8.7.16	12:20	14.7.16	11:45	
		14.7.16	15:10	31.10.16	23:59	

Unit No	Capacity in MW	Outage		Synchronization		Reason of Outage	
		Date	Time	Date	Time		
5	30	14.03.16	19:15	01.04.16	15:05	Stopped due to low demand and high frequency	
		11.04.16	19:06	11.04.16	21:22		
		17.04.16	10:45	17.04.16	18:38	Station shut down to attend ACW line.	
		18.04.16	12:54	24.04.16	10:55	Stopped due to low demand and high frequency	
		29.04.16	19:15	13.05.16	17:10		
		13.5.16	19:30	16.5.16	13:29		
		20.5.16	23:42	21.5.16	18:08	machine stopped to attend leakage of oil from IGV	
		21.5.16	18:55	21.5.16	20:04	Machine tripped on high exhaust temperature	
		22.5.16	11:46	23.5.16	11:30	Stopped due to low demand and high frequency	
		23.5.16	11:55	23.5.16	12:30	machine desynchronise to check the position of Bleed valve.	
		23.5.16	15:46	24.5.16	15:42	Machine tripped due to tripping of 160 MVA Tr-I& II. After that machine nottaken on load due to less demand	
		25.5.16	16:35	26.5.16	19:05	Stopped due to low demand and high frequency	
		27.5.16	00:07	27.5.16	17:20		
		27.5.16	17:25	28.5.16	11:07		
		29.5.16	22:10	29.5.16	22:22	Machine came on FSNL due to tripping of 160 MVA Tr-I& II.	
		10.6.16	16:54	10.6.16	17:08	machine came on FSNL as both the ICT 160 MVA TX-I & II tripped due to jek in the system.	
		11.6.16	20:45	13.6.16	11:12	Stopped due to low demand and high frequency	
		20.6.16	01:04	23.6.16	15:59	Machine stopped to inspect the low load reason on mahine by M/s BGGTS	
		23.6.16	16:00	24.6.16	16:18	Stopped due to low demand and high frequency	
		24.6.16	18:05	25.6.16	10:10		
		2.7.16	11:35	4.7.16	16:52		
		7.7.16	17:20	8.7.16	08:38		
		12.7.16	16:55	14.7.16	09:06		
		15.7.16	18:57	15.7.16	21:40		
		23.7.16	08:15	27.7.16	05:03		
		28.7.16	15:17	5.8.16	17:10		
		15.8.16	16:31	15.8.16	17:37		Heavy jerk observed in Control room. GT-5 tripped .Relay-P343 operated at protection panel.Both 160 MVA tr. Tripped.
		18.8.16	17:05	19.8.16	11:06		Stopped due to low demand and high frequency
		19.8.16	11:17	19.8.16	11:40	Machine desynchronize to check the hunting in load.	
		31.8.16	10:30	04.10.16	08.34	Stopped due to low demand and high frequency	
04.10.16	19:00	18.10.16	16.32				

Unit No	Capacity in MW	Outage		Synchronization		Reason of Outage
		Date	Time	Date	Time	
6	30	19.03.16	11:40	6.04.16	12:00	Stopped due to low demand and high frequency
		06.04.16	12:00	11.04.16	18:10	machine taken under S/d for Combustion Inspection & Boroscopic Inspection
		11.04.16	21:06	17.04.16	10:45	Stopped due to low demand and high frequency
		17.04.16	10:45	17.04.16	18:45	Station shut down to attend ACW line.
		17.04.16	18:45	18.04.16	11:30	Stopped due to low demand and high frequency
		24.04.16	11:44	13.05.16	18:45	
		13.5.16	20:15	16.5.16	17:23	
		23.5.16	15:46	23.5.16	16:37	
		29.5.16	01:50	02.06.16	10:48	Machine stopped due to low schedule from SLDC
		10.6.16	16:54	10.6.16	17:08	machine came on FSNL as both the ICT 160 MVA TX-I & II tripped due to jek in the system.
		11.6.16	20:45	13.6.16	20:34	Stopped due to low demand and high frequency
		20.6.16	16:35	24.6.16	13:20	
		24.6.16	18:08	25.6.16	10:04	
		6.7.16	16:55	8.7.16	11:05	
		12.7.16	15:00	14.7.16	15:05	Machine tripped on Electrical trouble normal shut down. SF-6 second stage gas pressure low alarm appeared on protection pannel
		27.7.16	03:58	27.7.16	09:11	
		27.7.16	09:11	05.08.16	12:10	Stopped due to low demand and high frequency
		29.8.16	17:25	05.10.16	16:25	Machine stopped as there was no schedule from SLDC on Spot R-LNG.
		05.10.16	16:25	05.10.16	17:20	Trial run of GT-6 to check the sound & vibn. While shutting down
		05.10.16	17:20	18.10.16	11:25	Stopped due to low demand and high frequency

Unit No	Capacity in MW	Outage		Synchronization		Reason of Outage
		Date	Time	Date	Time	
STG -1	30	29.1.16	14:00	01.04.16	18:05	M/c cleared from maintenance side but Stopped due to low demand and high frequency
		17.04.16	10:45	17.04.16	18:45	Station shut down to attend ACW line.
		17.04.16	18:45	29.04.16	19:15	Stopped due to low demand and high frequency
		01.5.16	21:27	01.5.16	22:59	Machine tripped due to failure of LT supply.
		13.5.16	16:10	13.5.16	18:48	Machine stopped due to problem in ACW line.
		23.5.16	15:46	23.5.16	17:25	Machine tripped due to tripping of 160 MVA Tr-I& II.
		23.5.16	19:20	24.5.16	14:04	Stopped due to low demand and high frequency
		29.5.16	00:50	06.06.16	11.44	
		10.6.16	16:54	10.6.16	17:53	machine tripped as both the ICT 160 MVA TX-I & II tripped due to jek in the system.
		13.6.16	07:11	13.06.16	10:45	Machine tripped as heavy jerk observed in the system as both 160 MVA Tx-I & II tripped.
		04.07.16	17:53	06.07.16	12:20	Stopped due to low demand and high frequency
		15.07.16	21:42	21.07.16	13:29	
		31.07.16	15:31	31.07.16	16:05	Due to jerk CEP-1A tripped & machine tripped on low vacuum.
		05.08.16	19:05	29.08.16	17:20	Machine stopped as per sSLDC to maintain only 72 MW generation.
		14.09.16	11:35	14.09.16	12:53	Machine tripped due to turbine F JB shaft vibration very high.
		15.09.16	14:28	15.09.16	16:02	Machine tripped on generator RJB housing vibration very high.
		06.10.16	17:02	06.10.16	18:46	Machine stopped to attend hot spot on Y-phase bushing of STG#1 unit Transformer.
		07.10.16	11:52	07.10.16	12:34	Due to Jerk , equipments like BFP, CEP & ACW tripped. Equipments restarted again jerk observed and the equipments BFP, CEP and ACW tripped and machine tripped on low vacuum.
		18.10.16	17:45	31.10.16	23:59	Stopped due to low demand and high frequency

Unit No	Capacity in MW	Outage		Synchronization		Reason of Outage
		Date	Time	Date	Time	
STG-2	30	29.01.16	14:00	17.04.16	10:45	M/c cleared from maintenance side Stopped due to low demand and high frequency
		17.04.16	10:45	17.04.16	18:45	Station shut down to attend ACW line.
		17.04.16	18:45	19.05.16	07:45	Stopped due to low demand and high frequency
		21.5.16	16:04	21.5.16	19:15	Machine tripped due to tripping of GT#4
		23.5.16	15:46	23.5.16	17:25	Machine tripped due to tripping of 160 MVA Tr-I& II.
		23.5.16	17:25	06.06.16	17:04	Stopped due to low demand and high frequency
		6.6.16	17:19	6.6.16	19:38	machine tripped on Hot well very high alarm as the parameter of STG# 2 got freezed and actual value of the same was not appearing on BCD.
		6.6.16	20:10	7.6.16	12:55	Stopped due to low demand and high frequency
		10.6.16	16:54	13.6.16	18:06	machine tripped as both the ICT 160 MVA TX-I & II tripped due to jek in the system. Machine not taken on load due low demand.
		13.6.16	22:38	20.6.16	11:40	Stopped due to low demand and high frequency
		20.6.16	16:35	24.6.16	14:54	
		24.6.16	17:47	30.6.16	13:45	
		30.6.16	19:00	30.6.16	22:03	Machine tripped due to tripping of GT#4
		02.07.16	08.48	19.10.16	14.00	Stopped due to low demand and high frequency
		19.10.16	14.00	20.10.16	23.59	Fire broke down in some control and power cables near CEP- 2A after that machine taken for major overhauling which was already planned from 20/10/2016 to 14/11/2016.
		21.10.16	00.00	31.10.16	23.59	Planned outage from 21.10.2016 to 20.11.2016

Unit No	Capacity in MW	Outage		Synchronization		Reason of Outage
		Date	Time	Date	Time	
STG-3	30	19.03.16	18:15	01.04.16	17:45	Stopped due to low demand and high frequency
		01.04.16	18:30	01.04.16	19:26	Tripped on Gen. Class-A relay
		01.04.16	19:32	01.04.16	20:07	Tripped on Gen. Class-A relay
		11.04.16	21:06	11.04.16	21:45	Machine stopped due to stopping of GT#6.
		17.04.16	10:45	17.04.16	19:57	Station shut down to attend ACW line.
		29.04.16	19:15	09.05.16	15:52	Stopped due to low demand and high frequency
		16.5.16	16:02	16.5.16	16:30	Machine stopped to attend false over speed alarm
		21.5.16	21:28	21.5.16	23:52	Machine tripped on Turbine FJB shaft vibration very high
		23.5.16	15:46	23.5.16	17:30	Machine tripped due to tripping of 160 MVA Tr-I& II.
		29.5.16	22:10	29.5.16	23:45	Machine tripped due to tripping of 160 MVA Tr-I& II.
		31.5.16	20:16	31.5.16	23:45	SNH feeder tripped & found earth fault.
		2.6.16	11:36	2.6.16	14:00	Machine tripped while changing the load from auxiliary to pressure.
		10.6.16	16:54	10.6.16	17:38	machine tripped due to jek in the system.
		11.6.16	20:45	13.6.16	13:26	Stopped due to low demand and high frequency
		13.6.16	21:30	13.6.16	22:30	Machine tripped on Class A relay.
		19.6.16	07:01	19.6.16	08:02	Machine tripped on FJB shaft vibration very high.
		20.6.16	16:35	24.6.16	15:16	Stopped due to low demand and high frequency
		24.6.16	18:12	25.6.16	11:55	
		7.7.16	17:20	8.7.16	11:18	
		12.7.16	16:55	14.7.16	12:30	Machine tripped on FJB shaft Vibration very high.
		18.7.16	04:38	18.7.16	06:45	
		27.7.16	03:58	27.7.16	09:11	Machine tripped due to tripping of GT-6 as running on single HRSG#6.
		28.7.16	15:17	05.08.16	16:30	Stopped due to low demand and high frequency
		5.08.16	18:01	05.08.16	18:52	Machine tripped on turbine oil pressure very low.
		9.08.16	10:55	09.08.16	11:31	Machine tripped on low vacuum due to tripping of CWP-1
		15.08.16	16:31	15.08.16	17:28	Heavy jerk observed. STG-3 tripped due to failure of auxiliary supply.
		28.08.16	14:28	28.08.16	16:16	Machine tripped on generator housing vibration high.after replacing the Vibratio card machine synchronized.
		28.08.16	16:27	28.08.16	17:03	Machine tripped on generator and turbine housing vibration high.
		31.08.16	10:30	04.10.16	13:14	Machine stopped as per sSLDC to maintain only 36 MW generation.
		04.10.16	19:00	18.10.16	13:25	Stopped due to low demand and high frequency

(C) PRAGATI

Unit No	Capacity in MW	Outage		Synchronization		Reason of Outage
		Date	Time	Date	Time	
1	104	01.04.16	00.00	06.04.16	06.00	Stopped due to low demand and high frequency
		01.05.16	05.58	01.05.16	13.15	Unit stopped by stn.
		07.05.16	11.37	07.05.16	12.34	Unit tripped.
		23.05.16	22.16	24.05.16	10.01	Unit stopped and started due to low demand and high frequency
		09.06.16	14:33	09.06.16	15:10	GT#1 tripped on grid disturbance.
		18.06.16	07:09	18.06.16	09:13	GT#1 tripped on grid disturbance.
		18.06.16	10:09	18.06.16	10:38	GT#1 tripped.
		11.07.16	08.10	11.07.16	09.32	Unit tripped due to grid disturbance
		16.07.16	08.50	19.07.16	11.00	Stopped due to low demand and high frequency
		19.07.16	11.00	19.07.16	14.01	Unit not available
		30.07.16	00.00	31.07.16	14.10	Stopped due to low demand and high frequency
		06.08.16	14.00	08.08.16	10.37	
		12.08.16	17.00	16.08.16	10.50	
		18.08.16	11.30	22.08.16	10.35	
		31.08.16	09.46	03.09.16	09.58	Unit stopped for CI.
		19.09.16	00.00	04.10.16	21.42	
		05.10.16	01.11	05.10.16	02.46	
		05.10.16	07.27	16.10.16	18.36	Generator cooler / winder problem attended during CI
		16.10.16	22.35	31.10.16	23.59	Stopped due to low demand and high frequency

Unit No	Capacity in MW	Outage		Synchronization		Reason of Outage
		Date	Time	Date	Time	
2	104	01.04.16	00.00	01.04.16	03.18	Stopped due to low demand and high frequency
		06.04.16	08.40	11.04.16	04.31	G.T.-2 was swppped by G.T. -1 and started as desired
		15.04.16	06.06	15.04.16	12.02	Unit stopped
		24.04.16	14.15	25.04.16	06.48	Stopped due to low demand and high frequency
		28.04.16	12.44	28.04.16	13.35	Unit tripped
		06.05.16	11.28	06.05.16	16.00	Unit tripped due to grid disturbance
		06.05.16	16.00	11.05.16	13.27	Unit tripped
		26.05.16	21.18	26.05.16	22.55	Unit tripped
		05.06.16	03:59	08.06.16	15:17	GT2 tripped
		10.06.16	16:50	10.06.16	17:38	GT#2 tripped on grid disturbance.
		13.06.16	19:49	13.06.16	20:54	GT#2 tripped on grid disturbance.
		18.06.16	07:09	18.06.16	09:54	GT#2 tripped on grid disturbance.
		19.06.26	05:58	20.06.16	06:00	Stopped due to low demand and high frequency
		13.07.16	16.29	15.07.16	19.18	Unit tripped
		31.07.16	07.22	03.08.16	14.24	Stopped due to low demand and high frequency
		28.08.16	12.39	28.08.16	16.00	G.T.-2 and STG was tripped due to grid disturbance
		28.08.16	16.00	28.08.16	22.45	Unit unavailable.
		03.09.16	11.05	03.09.16	12.00	Unit was swapped by G.T. -1
		03.09.16	12.00	04.09.16	18.00	Unit was remain unavailable
		04.09.16	18.00	07.09.16	22.58	Stopped due to low demand and high frequency
		01.10.16	15.13	01.10.16	16.00	G.T. -2 & STG tripped on grid disturbance
		08.10.16	13.28	08.10.16	14.15	

Unit No	Capacity in MW	Outage		Synchronization		Reason of Outage
		Date	Time	Date	Time	
STG	122	01.04.16	00.00	01.04.16	09.07	Stopped due to low demand and high frequency
		21.04.16	14.59	21.04.16	16.25	STG Tripped
		24.04.16	13.15	24.04.16	21.27	Unit stopped
		29.04.16	11.58	29.04.16	12.46	STG Tripped
		02.05.16	15.57	02.05.16	16.54	STG Tripped
		06.05.16	11.28	06.05.16	12.12	Unit tripped due to grid disturbanve
		07.05.16	11.40	07.05.16	13.30	Unit tripped alongwith G.T.-1
		08.05.16	17.49	08.05.16	19.35	STG Tripped
		10.05.16	17.55	10.05.16	23.58	STG Tripped
		13.05.16	19.02	13.05.16	20.50	Stopped due to low demand and high frequency
		05.06.16	14:20	05.06.16	15:06	STG tripped on grid disturbance.
		09.06.16	14:33	09.06.16	16:22	STG tripped on grid disturbance.
		10.06.16	16:50	10.06.16	18:00	STG tripped on grid disturbance.
		13.06.16	12:14	13.06.16	17:46	Stopped due to low demand and high frequency
		13.06.16	19:49	13.06.16	21:34	STG tripped on grid disturbance.
		18.06.16	07:09	18.06.16	10:05	STG tripped on grid disturbance.
		18.06.16	10:09	18.06.16	10:57	STG tripped on GT#1 tripped
		27.06.16	19:06	28.06.16	03:36	Stopped due to low demand and high frequency
		09.07.16	12.53	09.07.16	15.19	Unit tripped
		11.07.16	08.05	11.07.16	10.52	Unit tripped due to grid disturbance
		18.07.16	18.37	18.07.16	19.44	Unit tripped
		30.07.16	09.17	30.07.16	18.23	Stopped due to low demand and high frequency
		31.07.16	07.22	31.07.16	16.17	
		28.08.16	12.39	28.08.16	14.24	Unit tripped due to grid disturbance
		01.10.16	15.13	01.10.16	16.52	G.T. -2 & STG tripped on grid disturbance
		03.10.16	16.16	03.10.16	17.09	Unit tripped on grid disturbance
08.10.16	13.28	08.10.16	14.59			

(D) BADARPUR THERMAL POWER STATION

Unit	Capacity in MW	Outage		Synchronization		Reason of Outage
		Date	Time	Date	Time	
1	95	01.04.15	00.00	31.10.16	23.59	Stopped due to low demand and high frequency

Unit	Capacity in MW	Outage		Synchronization		Reason of Outage
		Date	Time	Date	Time	
2	95	24.09.15	19.52	31.10.16	23.59	Stopped due to low demand and high frequency

Unit	Capacity in MW	Outage		Synchronization		Reason of Outage
		Date	Time	Date	Time	
3	95	09.10.15	01.00	31.10.16	23.59	Stopped due to low demand and high frequency

Unit	Capacity in MW	Outage		Synchronization		Reason of Outage
		Date	Time	Date	Time	
4	210	12.12.15	14.30	04.04.16	07.47	Stopped due to low demand and high frequency
		11.04.16	14.03	12.04.16	20.11	Economizer tube leakage
		24.04.16	1621	24.04.16	21.52	PA Fan A lub oil sys temp high
		01.05.16	16.30	01.05.16	17.55	Human Error(Vacuum low)
		10.05.16	05.34	11.05.16	01.39	Boiler Drum Impulse line lkg
		11.05.16	09.08	21.05.16	03.10	Gen Seal problem
		21.05.16	04.04	21.05.16	04.38	ID Fan A Thermal Overload
		21.05.16	15.10	21.05.16	16.45	Relay malfunction (air flow low)
		03.06.16	21.30	05.06.16	07.03	Water Platen Lkg
		09.06.16	14.27	09.06.16	18.22	Grid Disturbance
		01.10.16	15.39	01.10.16	19.57	Unit tripped on grid disturbance

Unit	Capacity in MW	Outage		Synchronization		Reason of Outage
		Date	Time	Date	Time	
5	210	24.04.16	16.21	24.04.16	21.52	Stopped due to temp. high.
		06.06.16	09.50	07.06.16	13.53	Water leakage
		09.06.16	14.28	09.06.16	17.11	Tripped due to grid disturbance
		17.07.16	14.30	17.07.16	18.15	Oil surge relay cable inter core shorting.
		09.08.16	22.20	10.08.16	02.29	AVR and excitation system problem.
		01.10.16	15.39	01.10.16	18.57	Tripped due to grid disturbance
		01.10.16	19.02	01.10.16	19.20	Generator protection system
		05.10.16	03.45	07.10.16	08.54	Reheater tube leakage
		17.10.16	21.11	31.10.16	23.59	Planned shutdown

(E) BAWANA CCGT POWER STATION

Unit	Capacity in MW	Outage		Synchronization		Reason of Outage
		Date	Time	Date	Time	
1	216	16.07.15	02.18	31.10.16	23.59	Machine tripped due to compressor stalling alarm

Unit	Capacity in MW	Outage		Synchronization		Reason of Outage
		Date	Time	Date	Time	
2	216	24.03.16	00.00	03.05.16	06.00	Stopped due to low demand and high frequency
		03.05.16	06.00	03.05.16	09.30	Machine shutdown for planned mtc.
		03.05.16	09.30	13.06.16	15.00	Stopped due to low demand and high frequency
		13.06.16	15.00	16.06.16	17.15	Machine shut down for planned maintenance due to annual testing of generator transformer .
		16.06.16	17.15	26.06.16	09.24	Stopped due to low demand and high frequency
		02.08.16	15.23	02.08.16	15.47	Machine tripped due to failure of primary DPU Card
		06.08.16	11.07	06.08.16	12.50	Machine tripped due to rebooting of Mark VI.
		01.09.16	08.45	05.09.16	12.00	Machine shutdown for attending internal fault
		05.09.16	12.00	31.10.16	23.59	Stopped due to low demand and high frequency

Unit	Capacity in MW	Outage		Synchronization		Reason of Outage
		Date	Time	Date	Time	
STG-1	254	28.03.16	00.00	15.04.16	10.00	Planned Shut down.
		15.04.16	10.00	03.05.16	06.00	Stopped due to low demand and high frequency
		03.05.16	06.00	03.05.16	09.30	Machine shutdown for planned mtc.
		03.05.16	09.30	13.06.16	15.00	Stopped due to low demand and high frequency
		13.06.16	15.00	16.06.16	17.15	Machine shut down for planned maintenance due to annual testing of generator transformer .
		16.06.16	17.15	26.06.16	15.20	Stopped due to low demand and high frequency
		02.08.16	15.29	02.08.16	16.14	Machine tripped due to failure of primary DPU Card
		06.08.16	11.07	06.08.16	13.59	Machine tripped due to rebooting of Mark VI.
		01.09.16	08.45	05.09.16	12.00	Machine shutdown for attending internal fault
		05.09.16	12.00	31.10.16	23.59	Stopped due to low demand and high frequency

Unit	Capacity in MW	Outage		Synchronization		Reason of Outage
		Date	Time	Date	Time	
3	216	08.01.16	23.15	18.04.16	05.23	Stopped due to low demand and high frequency
		18.04.16	11.16	18.04.16	19.12	Unit tripped
		03.05.16	06.08	03.05.16	08.57	Machine shutdown for planned mtc.
		23.05.16	19.04	10.08.16	14.00	Stopped due to low demand and high frequency
		10.08.16	14.00	18.08.16	00.00	Machine is shutdown for palnnd mtc.
		01.09.16	00.00	19.09.16	18.59	Stopped due to low demand and high frequency
		23.09.16	23.59	29.09.16	22.16	
		07.10.16	11.43	07.10.16	15.48	Machine tripped due to stator earth fault.
14.10.16	17.30	31.10.16	23.59	Stopped due to low demand and high frequency		

Unit	Capacity in MW	Outage		Synchronization		Reason of Outage
		Date	Time	Date	Time	
4	216	08.01.16	23.15	03.05.16	06.00	Stopped due to low demand and high frequency
		03.05.16	06.00	03.05.16	09.30	Machine shutdown for planned mtc.
		03.05.16	09.30	27.05.16	01.12	Stopped due to low demand and high frequency
		30.05.16	11.16	05.09.16	00.44	
		05.10.16	13.00	14.10.16	13.30	
		29.10.16	00.02	31.10.16	23.59	

Unit	Capacity in MW	Outage		Synchronization		Reason of Outage
		Date	Time	Date	Time	
STG-2	254	28.03.16	00.00	30.04.16	23.59	Planned shutdown
		03.05.16	06.00	03.05.16	09.30	Machine shutdown for planned mtc.
		03.05.16	06.10	03.05.16	10.39	Machine shutdown for planned mtc.
		06.05.16	16.45	06.05.16	17.44	Unit tripped
		23.05.16	19.06	27.05.16	08.24	Stopped due to low demand and high frequency
		27.05.16	11.18	05.09.16	11.03	
		20.09.16	07.05	20.09.16	08.02	HRSG #3 taken out of service due to internal fault.
		07.10.16	11.43	07.10.16	17.48	STG desynchronized due to tripping of unit -3
		18.10.16	03.55	18.10.16	10.10	Machine tripped due to internal problem
		29.10.16	00.03	31.10.16	23.59	Stopped due to low demand and high frequency

(F) RITHALA POWER STATION

Unit	Capacity in MW	Outage		Synchronization		Reason of Outage
		Date	Time	Date	Time	
1	31.8	19.03.13	17:32	31.10.16	23.59	Stopped due to low demand and high frequency

Unit	Capacity in MW	Outage		Synchronization		Reason of Outage
		Date	Time	Date	Time	
2	31.8	07.06.13	22:41	31.10.16	23.59	Stopped due to low demand and high frequency

Unit	Capacity in MW	Outage		Synchronization		Reason of Outage
		Date	Time	Date	Time	
STG	31.8	07.06.13	22:38	31.10.16	23.59	Stopped due to low demand and high frequency

ALLOCATION OF POWER TO DELHI

A)

Time block 00.00hrs. to 24.00hrs. @ 0% allocation from Unallocated Quota from 01.04.2016

Name of the Stn	Installed capacity	Total Un-allocated	Basic Allocation	Basic Allocation at periphery	Allocation out of Unallocated Quota	Allocation out of Un-allocation Quota at Delhi periphery	Total allocation at Delhi periphery
1	2	3	4	5	6	7	(8)=(5)+(7)
<u>NTPC STATIONS</u>							
Singrauli STPS	2000	300	150	130	0	0	130
Rihand-I	1000	150	100	87	0	0	87
Rihand Stage -II	1000	150	126	109	0	0	109
Rihand Stage -III	1000	150	132	115	0	0	115
ANTA GPS	419	63	44	41	0	0	41
Auriya GPS	663.36	99	72	67	0	0	67
Dadri GPS	829.78	129	91	85	0	0	85
Dadri NCTPS (Th)	840	0	756	657	0	0	657
Dadri NCTPS (Th) Stage-II	980	147	735	639	0	0	639
Unchahaar-I TPS	420	20	24	21	0	0	21
Unchahaar-II TPS	420	63	47	41	0	0	41
Unchahaar-III TPS	210	31	29	25	0	0	25
Koldam HEP	800	120	56	53	0	0	53
TOTAL	10582	1422	2362	2069	0	0	2069
<u>NHPC</u>							
Baira Suil HPS	180	0	20	19	0	0	19
Salal HPS	690	0	80	76	0	0	76
Tanakpur HEP	94	0	12	11	0	0	11
Chamera HEP	540	0	43	41	0	0	41
Chamera-II HEP	300	54	40	38	0	0	38
Chamera-III HEP	231	35	29	28	0	0	28
URI-I HEP	480	0	53	50	0	0	50
URI-II HEP	240	0	32	31	0	0	31
Sewa HEP	120	18	16	15	0	0	15
Dhauri Ganga HEP	280	42	37	35	0	0	35
Dulhasti HEP	390	58	50	48	0	0	48
Parbati-III HEP	520	66	66	63	0	0	63
TOTAL	4065	272	479	455	0	0	455
<u>NPC</u>							
Narora APS	440	64	47	41	0	0	41
RAPP (C)	440	64	56	49	0	0	49
TOTAL	880	128	103	89	0	0	89
<u>SVJNL</u>							
Nathpa Jhakri HEP	1500	149	142	135	0	0	135
<u>THDC</u>							
Tehri Hydro	1000	99	63	60	0	0	60
Koteshwar HEP	400	40	39	37	0	0	37
TOTAL	1400	139	102	97	0	0	97
Total	18427	2110	3188	2846	0	0	2846
<u>Allocation from ER and Tala HEP</u>							
Farakka	1600	0	22	19	0	0	19
Kahalgaon	840	0	51	43	0	0	43
Talchar	1000	0	0	0	0	0	0
Tala HEP	1020	153	30	25	0	0	25
Kahalgaon-II	1500	0	157	131	0	0	131
Total ER	5960	153	261	217	0	0	217
<u>Joint Venture</u>							
Jhajjar TPS	1500	114	643	577	0	0	577
Ultra Mega Projects							
Sasan	3960	0	446	383	0	0	383
Grand Total	29847	2377	4536	4023	0	0	4023

B)

Time block 00.00hrs. to 24.00hrs. @ 0% allocation from Unallocated Quota from 05.08.2016

Name of the Stn	Installed capacity	Total Un-allocated	Basic Allocation	Basic Allocation at periphery	Allocation out of Unallocated Quota	Allocation out of Un-allocation Quota at Delhi periphery	Total allocation at Delhi periphery
1	2	3	4	5	6	7	(8)=(5)+(7)
<u>NTPC STATIONS</u>							
Singrauli STPS	2000	300	150	130	0	0	130
Rihand-I	1000	150	100	87	0	0	87
Rihand Stage -II	1000	150	126	109	0	0	109
Rihand Stage -III	1000	150	132	115	0	0	115
ANTA GPS	419	63	44	41	0	0	41
Auriya GPS	663.36	99	72	67	0	0	67
Dadri GPS	829.78	129	91	85	0	0	85
Dadri NCTPS (Th)	840	0	756	657	0	0	657
Dadri NCTPS (Th) Stage-II	980	147	730	634	0	0	634
Unchahaar-I TPS	420	20	24	21	0	0	21
Unchahaar-II TPS	420	63	47	41	0	0	41
Unchahaar-III TPS	210	31	29	25	0	0	25
Koldam HEP	800	120	56	53	0	0	53
TOTAL	10582	1422	2357	2065	0	0	2065
<u>NHPC</u>							
Baira Suil HPS	180	0	20	19	0	0	19
Salal HPS	690	0	80	76	0	0	76
Tanakpur HEP	94	0	12	11	0	0	11
Chamera HEP	540	0	43	41	0	0	41
Chamera-II HEP	300	54	40	38	0	0	38
Chamera-III HEP	231	35	29	28	0	0	28
URI-I HEP	480	0	53	50	0	0	50
URI-II HEP	240	0	32	31	0	0	31
Sewa HEP	120	18	16	15	0	0	15
Dhaulti Ganga HEP	280	42	37	35	0	0	35
Dulhasti HEP	390	58	50	48	0	0	48
Parbati-III HEP	520	66	66	63	0	0	63
TOTAL	4065	272	479	455	0	0	455
<u>NPC</u>							
Narora APS	440	64	47	41	0	0	41
RAPP (C)	440	64	56	49	0	0	49
TOTAL	880	128	103	89	0	0	89
<u>SVJNL</u>							
Nathpa Jhakri HEP	1500	149	142	135	0	0	135
<u>THDC</u>							
Tehri Hydro	1000	99	63	60	0	0	60
Koteshwar HEP	400	40	39	37	0	0	37
TOTAL	1400	139	102	97	0	0	97
Total	18427	2110	3183	2842	0	0	2842
<u>Allocation from ER and Tala HEP</u>							
Farakka	1600	0	22	19	0	0	19
Kahalgaon	840	0	51	43	0	0	43
Talchar	1000	0	0	0	0	0	0
Tala HEP	1020	153	30	25	0	0	25
Kahalgaon-II	1500	0	157	131	0	0	131
Total ER	5960	153	261	217	0	0	217
<u>Joint Venture</u>							
Jhajjar TPS	1500	114	693	622	0	0	622
Ultra Mega Projects							
Sasan	3960	0	446	383	0	0	383
Grand Total	29847	2377	4582	4064	0	0	4064

5 ALLOCATION OF POWER TO DISCOMS

A) ALLOCATION OF POWER TO VARIOUS LICENCEES AS PER ORDER OF DERC AND DECISION OF GNCTD FOR ALLOCATION OF CENTRAL SECTOR STATIONS (DADRI THERMAL & BTPS) AND STATE SECTOR GENERATING STATIONS w.e.f. 06.08.2013.

(Allocation In %)

(A) 10.00hrs. to 17.00hrs.

SOURCES	LICENSEES					
	NDMC	MES	NDPL	BRPL	BYPL	TOTAL
1. Central Sector without Dadri (Th)	0	0	29.18	43.58	27.24	100.00
2. Dadri (Th)	16.63	0	24.22	36.86	22.39	100.00
3. BTPS	17.73	7.09	21.81	33.2	20.17	100.00
4. RPH	0	0	29.025	44.133	26.842	100.00
5. GT	0	0	29.02	44.16	26.82	100.00
6. Pragati	30.3	0	20.22	30.78	18.7	100.00
7. DVC	0	0	29.18	43.58	27.24	100.00
8. BAWANA CCGT*	7.30	1.82	20.688	30.888	19.304	80.00

(B) 00.00hrs. to 10.00hrs. and 17.00hrs. to 24.00hrs.

SOURCES	LICENSEES					
	NDMC	MES	NDPL	BRPL	BYPL	TOTAL
1. Central Sector without Dadri (Th)	0	0	29.18	43.58	27.24	100.00
2. Dadri (Th)	16.53	0	24.22	36.86	22.39	100.00
3. BTPS	17.73	7.09	21.81	33.2	20.17	100.00
4. RPH	0	0	29.025	44.133	26.842	100.00
5. GT	0	0	29.02	44.16	26.82	100.00
6. Pragati	30.3	0	20.22	30.78	18.7	100.00
7. DVC	0	0	29.18	43.58	27.24	100.00
8. BAWANA CCGT*	7.30	1.82	20.688	30.888	19.304	80.00

* 20% POWER OF BAWANA CCGT ALLOCATED TO HARYANA (10%) & PUNJAB (10%)

6 POWER AVAILABILITY-DEMAND POSITION AT THE TIME OF PEAK DEMAND MET DURING OCTOBER 2016

All figures in MW

Date	Time of peak demand	Generation within Delhi								Import from the Grid	Schedule from the Grid	OD(-) / UD(+)	Demand met	Shedding	Un-Restricted Demand
		RPH	GT	PPCL	Rithala	Bawana	Towmel	BTPS	Total						
(1)	(2)	(3)	(4)	(5)	(6)	(7)	(8)	(9)= (3) to (8)	(10)	(11)	(12)= (11) - (10)	(13)= (11)+ (12)	(14)	(15)= (13)+ (14)	
1	22:34:43	0	72	148	0	546	16	320	1102	4043	3871	172	5145	0	5145
2	00:00:12	0	72	149	0	544	16	318	1099	3946	3894	52	5045	0	5045
3	22:50:40	0	71	146	0	501	12	319	1049	4393	4281	112	5442	0	5442
4	00:00:00	0	72	144	0	500	13	326	1055	4166	3999	167	5221	0	5221
5	19:04:01	0	69	149	0	251	8	173	650	4021	3952	69	4671	0	4671
6	15:37:01	0	70	142	0	252	12	174	650	4161	4102	59	4811	0	4811
7	15:20:42	0	69	144	0	-9	18	369	591	4174	4049	125	4765	0	4765
8	00:00:19	0	73	147	0	250	13	333	816	3667	3585	82	4483	0	4483
9	23:20:05	0	74	149	0	252	14	327	816	3491	3379	112	4307	0	4307
10	18:36:20	0	74	147	0	251	14	304	790	3552	3476	76	4342	0	4342
11	00:00:20	0	75	149	0	252	13	328	817	3285	3296	-11	4102	0	4102
12	19:06:21	0	74	147	0	251	16	329	817	3153	3097	56	3970	0	3970
13	18:30:53	0	74	147	0	251	16	326	814	3391	3220	171	4205	0	4205
14	18:20:47	0	72	147	0	245	16	327	807	3404	3237	167	4211	0	4211
15	18:28:12	0	74	149	0	252	16	329	820	3083	3023	60	3903	0	3903
16	18:34:19	0	74	149	0	253	16	328	820	2807	2797	10	3627	0	3627
17	18:16:41	0	74	147	0	251	16	309	797	3124	3120	4	3921	0	3921
18	18:30:19	0	73	147	0	254	16	172	662	3290	3222	68	3952	0	3952
19	18:21:39	0	77	148	0	249	16	166	656	3188	3172	16	3844	0	3844
20	18:16:29	0	76	146	0	253	16	167	658	3380	3281	99	4038	0	4038
21	18:18:23	0	74	144	0	252	16	166	652	3421	3220	201	4073	0	4073
22	18:45:32	0	74	147	0	256	16	164	657	3190	3042	148	3847	0	3847
23	18:15:30	0	74	149	0	249	16	163	651	2872	2827	45	3523	0	3523
24	18:30	0	76	146	0	254	16	162	654	3259	3167	92	3913	0	3913
25	18:31:02	0	76	149	0	253	16	167	661	3294	3272	22	3955	0	3955
26	18:29:46	0	76	149	0	250	15	169	659	3311	3269	42	3970	0	3970
27	18:29:46	0	77	153	0	249	16	171	666	3197	3271	-74	3863	0	3863
28	18:19:56	0	75	153	0	236	14	171	649	3076	3157	-81	3725	0	3725
29	10:59:14	0	75	153	0	-2	16	162	404	2944	2851	93	3348	0	3348
30	18:40:18	0	76	152	0	-5	18	165	406	2484	2653	-169	2890	0	2890
31	18:20:56	0	75	152	0	-4	18	166	407	2481	2439	42	2888	0	2888

POWER AVAILABILITY- DEMAND POSITION AT THE TIME OF MAXIMUM UNRESTRICTED DEMAND DURING OCTOBER 2016

Date	Time of peak demand	Generation within Delhi								Import from the Grid	Schedule from the Grid	OD(-)/UD(+)	Demand met	Shedding	Un-Restricted Demand
		RPH	GT	PPCL	Rithala	Bawana	Towmcl	BTPS	Total						
(1)	(2)	(3)	(4)	(5)	(6)	(7)	(8)		(9)=(3) to (8)	(10)	(11)	(12)=(11) - (10)	(13)=(11)+ (12)	(14)	(15)=(13)+ (14)
1	22:34:43	0	72	148	0	546	16	320	1102	4043	3871	172	5145	0	5145
2	00:00:12	0	72	149	0	544	16	318	1099	3946	3894	52	5045	0	5045
3	22:50:40	0	71	146	0	501	12	319	1049	4393	4281	112	5442	0	5442
4	00:00:00	0	72	144	0	500	13	326	1055	4166	3999	167	5221	0	5221
5	19:04:01	0	69	149	0	251	8	173	650	4021	3952	69	4671	0	4671
6	15:37:01	0	70	142	0	252	12	174	650	4161	4102	59	4811	0	4811
7	15:20:42	0	69	144	0	-9	18	369	591	4174	4049	125	4765	0	4765
8	00:00:19	0	73	147	0	250	13	333	816	3667	3585	82	4483	0	4483
9	23:20:05	0	74	149	0	252	14	327	816	3491	3379	112	4307	0	4307
10	18:36:20	0	74	147	0	251	14	304	790	3552	3476	76	4342	0	4342
11	00:00:20	0	75	149	0	252	13	328	817	3285	3296	-11	4102	0	4102
12	19:06:21	0	74	147	0	251	16	329	817	3153	3097	56	3970	0	3970
13	18:30:53	0	74	147	0	251	16	326	814	3391	3220	171	4205	0	4205
14	18:20:47	0	72	147	0	245	16	327	807	3404	3237	167	4211	0	4211
15	18:28:12	0	74	149	0	252	16	329	820	3083	3023	60	3903	0	3903
16	18:34:19	0	74	149	0	253	16	328	820	2807	2797	10	3627	0	3627
17	18:16:41	0	74	147	0	251	16	309	797	3124	3120	4	3921	0	3921
18	18:30:19	0	73	147	0	254	16	172	662	3290	3222	68	3952	0	3952
19	18:21:39	0	77	148	0	249	16	166	656	3188	3172	16	3844	0	3844
20	18:16:29	0	76	146	0	253	16	167	658	3380	3281	99	4038	0	4038
21	18:18:23	0	74	144	0	252	16	166	652	3421	3220	201	4073	0	4073
22	18:45:32	0	74	147	0	256	16	164	657	3190	3042	148	3847	0	3847
23	18:15:30	0	74	149	0	249	16	163	651	2872	2827	45	3523	0	3523
24	18:30	0	76	146	0	254	16	162	654	3259	3167	92	3913	0	3913
25	18:31:02	0	76	149	0	253	16	167	661	3294	3272	22	3955	0	3955
26	18:29:46	0	76	149	0	250	15	169	659	3311	3269	42	3970	0	3970
27	18:29:46	0	77	153	0	249	16	171	666	3197	3271	-74	3863	0	3863
28	18:19:56	0	75	153	0	236	14	171	649	3076	3157	-81	3725	0	3725
29	10:59:14	0	75	153	0	-2	16	162	404	2944	2851	93	3348	0	3348
30	18:40:18	0	76	152	0	-5	18	165	406	2484	2653	-169	2890	0	2890
31	18:20:56	0	75	152	0	-4	18	166	407	2481	2439	42	2888	0	2888

SOURCEWISE SCHEDULED DRAWL FROM NORTHERN GRID AS WELL AS AVAILABILITY WITHIN DELHI FOR OCTOBER 2016

A) AVAILABILITY FROM GENCO AND PRAGATI STNs. (all fig in MUs)

A (i) RPH	0.00
(ii) GT+STG	58.279
(iii) PRAGATI	117.612
(iv) RITHALA	0.000
(v) BAWANA CCGT	200.795
(vi) Timarpur ó Okhla	13.271
TOTAL	389.957
B) AVAILABILITY FROM BTPS	176.214
C) AUXILIARY CONSUMPTION OF GENERATING STNs. EXCLUDING BTPS	13.996
D) NET GENERATION AVAILABLE WITHIN DELHI(A+B-C)	552.175

B) SOURCE WISE SCHEDULED DRAWL FROM THE NORTHERN GRID

NAME OF THE STATION	AVAILABILITY AT POWER PLANT	AVAILABILITY AT DELHI PERIPHERY	ALLOCATION MADE BY NRLDC AT POWER PLANT	ALLOCATION MADE BY NRLDC AT DELHI PERIPHERY
B/SUIL	3.133	3.066	3.133	3.066
SALAL	24.185	23.668	24.185	23.668
SASAN	248.358	243.073	246.920	241.666
TANKAPUR	5.442	5.326	5.442	5.326
CHAMERA	6.531	6.391	6.531	6.391
CHAMERA -II	10.638	10.411	10.638	10.411
CHAMERA -III	6.220	6.087	6.220	6.087
DHAULIGANGA	8.977	8.786	8.977	8.786
SEWA -2	1.528	1.495	1.528	1.495
URI	9.012	8.819	9.012	8.819
URI-II	7.135	6.983	7.135	6.983
KOLDAM	0.000	0.000	0.000	0.000
KOTESHWAR	6.788	6.643	6.788	6.643
PARBATI3	4.177	4.088	4.177	4.088
RAMPUR	0.000	0.000	0.000	0.000
MUNDRA_UMPP	0.000	0.000	0.000	0.000
ANTA (GAS)	15.087	14.761	5.646	5.526
ANTA (RLNG)	0.000	0.000	0.000	0.000
ANTA (LIQUID)	15.224	14.905	0.000	0.000
DADRI (GAS)	35.512	34.756	7.452	7.294
DADRI (RLNG)	0.000	0.000	0.000	0.000
DADRI (LIQUID)	28.256	27.654	0.000	0.000
AURAIYA (GAS)	3.738	3.655	3.318	3.245
AURAIYA (RLNG)	0.000	0.000	0.000	0.000
AURAIYA (LIQUID)	46.672	45.682	0.000	0.000
SINGRAULI	93.043	91.060	85.937	84.100
RIHAND -I	67.363	65.925	56.455	55.249
RIHAND -II	82.149	80.396	66.147	64.733
RIHAND -III	47.910	46.894	40.956	40.085
UNCHAHAAR-I	10.006	9.794	5.708	5.588
UNCHAHAAR-II	33.335	32.625	21.832	21.368
UNCHAHAAR-III	20.569	20.131	13.439	13.153
DADRI (TH)	545.724	534.105	260.843	255.268
DADRI (TH) STAGE-II	540.091	528.593	419.551	410.622
NAPP	18.110	17.727	18.023	17.642
RAPP 'B'	0.000	0.000	0.000	0.000
RAPP 'C'	3.943	3.862	3.652	3.577
NATHPA JHAKRI	43.693	42.763	32.595	31.901
DULASTI	29.969	29.329	29.969	29.329
TEHRI	13.209	12.927	13.209	12.927
JHAJJAR	465.892	455.972	12.085	11.816
KHELGAON	33.423	32.712	20.253	19.819
KHELGAON-II	108.593	106.280	78.956	77.270
FARAKA	14.467	14.159	9.144	8.949

NAME OF THE STATION	AVAILABILITY AT POWER PLANT	AVAILABILITY AT DELHI PERIPHERY	ALLOCATION MADE BY NRLDC AT POWER PLANT	ALLOCATION MADE BY NRLDC AT DELHI PERIPHERY
TALA	20.267	19.835	20.267	19.835
TALCHER	0.000	0.000	0.000	0.000
DVC	237.210	234.536	234.536	229.539
UTTAR PRADESH	0.000	0.000	0.000	0.000
TRIPUA	0.000	0.000	0.000	0.000
MEGHALAYA	0.000	0.000	0.000	0.000
UTTRANCHAL	0.000	0.000	0.000	0.000
DVC CTPS (BYPL)	0.000	0.000	0.000	0.000
DVC CTPS (NDPL)	0.000	0.000	0.000	0.000
METHON POWER(NDPL)LT-06	181.107	179.186	179.186	175.369
DVC MEJIA (LT-08)(BYPL)	57.415	56.768	56.768	55.555
URS	0.000	0.000	0.000	0.000
JAMMU & KASHMIR	3.240	3.217	3.217	3.149
HIMACHAL PRADESH	1.704	1.681	1.681	1.645
PUNJAB	0.000	0.000	0.000	0.000
MADHYA PRADESH	0.000	0.000	0.000	0.000
CHATTISHGARH	22.795	22.390	22.390	21.908
DVC LT-9	0.000	0.000	0.000	0.000
HARYANA (LT-05)	6.824	6.769	6.769	6.624
RAJASTHAN	0.000	0.000	0.000	0.000
ORISSA	34.888	34.501	34.501	33.756
RAJASTHAN(SOLAR) BRPL-LT36	3.967	3.885	3.885	3.803
RAJASTHAN(SOLAR) BYPL - LT-35	3.804	3.726	3.726	3.647
RAJASTHAN(SOLAR) TPDDL LT-31	3.777	3.699	3.699	3.620
TO JAMMU & KASHMIR	0.000	0.000	0.000	0.000
TO ASSAM	-15.052	-15.245	-15.245	-15.577
TO UTTAR PRADESH	-1.444	-1.477	-1.477	-1.507
TO MEGHALAYA	0.000	0.000	0.000	0.000
TO PUNJAB	0.000	0.000	0.000	0.000
TO CHATTISHGARH	0.000	0.000	0.000	0.000
TO UTTRANCHAL	0.000	0.000	0.000	0.000
TO KERALA	0.000	0.000	0.000	0.000
TO RAJASTHAN	0.000	0.000	0.000	0.000
TO WEST BENGAL	0.000	0.000	0.000	0.000
BTPS TO MP	0.000	0.000	0.000	0.000
TO HIMACHAL PRADESH	0.000	0.000	0.000	0.000
TO ORISSA	0.000	0.000	0.000	0.000
POWER EXCHANGE(IEX)	86.923	85.062	86.923	85.062
TO POWER EXCHANGE (IEX)	-58.948	-60.194	-58.948	-60.194
POWER EXCHANGE(PX)	0.000	0.000	0.000	0.000
TO POWER EXCHANGE (PX)	0.000	0.000	0.000	0.000
TO SHARE PROJECT (HARYANA)	-16.675	-17.040	-16.675	-17.040
TO SHARE PROJECT (PUNJAB)	-16.087	-16.439	-16.087	-16.439
TOTAL	3213.818	3146.368	2094.973	2045.646

C) AGENCY WISE BREAKUP OF ENERGY SCHEDULED DRAWL FROM THE GRID

NAME OF THE STATION	AVAILABILITY AT POWER PLANT	AVAILABILITY AT DELHI PERIPHERY	ALLOCATION MADE BY NRLDC AT POWER PLANT	ALLOCATION MADE BY NRLDC AT DELHI PERIPHERY
NTPC - NR	1584.678	1550.937	987.285	966.231
NTPC - ER	156.484	153.151	108.353	106.038
NHPC	116.947	114.451	116.947	114.451
NPC	22.054	21.590	21.675	21.218
SASAN	248.358	243.073	246.920	241.666
KOTESHWAR	6.788	6.643	6.788	6.643
MUNDRA_UMPP	0.000	0.000	0.000	0.000
NATHPA JHAKRI	43.693	42.763	32.595	31.901
TEHRI	13.209	12.927	13.209	12.927
TALA	20.267	19.835	20.267	19.835
JHAJJAR	465.892	455.972	12.085	11.816
TALCHER	0.000	0.000	0.000	0.000
RAJASTHAN SOLAR(BRPL)T-36	3.967	3.885	3.885	3.803

NAME OF THE STATION	AVAILABILITY AT POWER PLANT	AVAILABILITY AT DELHI PERIPHERY	ALLOCATION MADE BY NRLDC AT POWER PLANT	ALLOCATION MADE BY NRLDC AT DELHI PERIPHERY
RAJASTHAN SOLAR(BYPL)T-35	3.804	3.726	3.726	3.647
RAJASTHAN SOLAR(TPDDL)T-31	3.777	3.699	3.699	3.620
DVC	237.210	234.536	234.536	229.539
UTTAR PRADESH	0.000	0.000	0.000	0.000
TRIPURA	0.000	0.000	0.000	0.000
MEGHALAYA	0.000	0.000	0.000	0.000
UTTRANCHAL	0.000	0.000	0.000	0.000
DVC CTPS (BYPL)	0.000	0.000	0.000	0.000
DVC CTPS (NDPL)	0.000	0.000	0.000	0.000
METHON POWER (NDPL)-LT-06	181.107	179.186	179.186	175.369
DVC MEJIA (LT-08)(BYPL)	57.415	56.768	56.768	55.555
URS	0.000	0.000	0.000	0.000
JAMMU & KASHMIR	3.240	3.217	3.217	3.149
HIMACHAL PRADESH	1.704	1.681	1.681	1.645
PUNJAB	0.000	0.000	0.000	0.000
MADHYA PRADESH	0.000	0.000	0.000	0.000
CHATTISHGARH	22.795	22.390	22.390	21.908
DVC (FOR NDPL) LT-09	0.000	0.000	0.000	0.000
HARYANA (LT -05)	6.824	6.769	6.769	6.624
RAJASTHAN	0.000	0.000	0.000	0.000
ORISSA	34.888	34.501	34.501	33.756
POWER EXCHANGE(IEX)	86.923	85.062	86.923	85.062
POWER EXCHANGE(PX)	0.000	0.000	0.000	0.000
TOTAL	3322.024	3256.762	2203.405	2156.403

D) AGENCY WISE BREAKUP OF ENERGY SCHEDULED BY NRLDC FOR EXPORT TO OTHER UTILITIES FROM DTL

NAME OF THE STATION	AVAILABILITY AT POWER PLANT	AVAILABILITY AT PERIPHERY	ALLOCATION MADE BY NRLDC AT POWER PLANT	ALLOCATION MADE BY NRLDC AT POWER PERIPHERY
TO JAMMU & KASHMIR	0.000	0.000	0.000	0.000
TO ASSAM	-15.052	-15.245	-15.245	-15.577
TO UTTAR PRADESH	-1.444	-1.477	-1.477	-1.507
TO MEGHALAYA	0.000	0.000	0.000	0.000
TO CHATTISHGARH	0.000	0.000	0.000	0.000
TO PUNJAB	0.000	0.000	0.000	0.000
TO UTTRANCHAL	0.000	0.000	0.000	0.000
TO KERALA	0.000	0.000	0.000	0.000
TO RAJASTHAN	0.000	0.000	0.000	0.000
TO WEST BENGAL	0.000	0.000	0.000	0.000
BTPS TO MP	0.000	0.000	0.000	0.000
TO HIMACHAL PRADESH	0.000	0.000	0.000	0.000
TO ORISSA	0.000	0.000	0.000	0.000
TO POWER EXCHANGE (IEX)	-58.948	-60.194	-58.948	-60.194
TO POWER EXCHANGE (PX)	0.000	0.000	0.000	0.000
TO SHARE PROJECT (HARYANA)	-16.675	-17.040	-16.675	-17.040
TO SHARE PROJECT (PUNJAB)	-16.087	-16.439	-16.087	-16.439
TOTAL	-108.207	-110.395	-108.432	-110.756
TOTAL SCHEDULED DRAWAL FROM THE GRID	3213.818	3146.368	2094.973	2045.646

TOTAL CONSUMPTION INCLUDING AUX. OF GENERATING STNs. EXCLUDING BTPS		2633.595
NET CONSUMPTION		2619.599
AVAILABILITY WITHIN DELHI		552.175
ACTUAL DRAWAL FROM THE GRID		2067.424
OVER DRAWAL(+)/UNDER DRAWAL(-) FROM THE GRID ON THE BASIS OF SCHEDULED ALLOCATION MADE BY NRLDC TO DELHI AT PERIPHERY		21.778
LOAD SHEDDING		2.065
UNRESTRICTED DEMAND (GROSS)		2635.660
UNRESTRICTED DEMAND (NET)		2621.664
MAX. NET CONSUMPTION		112.223 ON 03.10.2016
MAX. LOAD SHEDDING		404MW ON 29.10.2016 AT 12.06HRS.
PEAK LOAD	Peak Demand during the month	SHEDDING AT PEAK TIME
DAY PEAK	5221MW AT 00.00HRS ON 04.10.2016	1 MW
EVENING PEAK	5442MW AT 22.50.40HRS ON 03.10.2016	0 MW
P.L.F. OF GENCO AND PRAGATI STNs.	RPH	0.00%
	GT	29.01%
	PRAGATI	47.90%
	RITHALA	0.00%
	BAWANA	19.69%
	Timarpur Okhla	111.48%

DATE	No. of Under Freq. Relay Operated	Shedding due to under frequency relay operation in MUs					Shedding due to Grid Restrictions (Over drawal / low freq.)				
		BSES		NDPL	NDMC	TOTAL	BSES		NDPL	NDMC	MES
		BYPL	BRPL				BYPL	BRPL			
1	2	3	4	5	6	7=3 to 6	8	9	10	11	12
01.Oct.16	5	0.023	0.667	0.000	0.000	0.690	0.000	0.000	0.000	0.000	0.000
02.Oct.16	0	0.000	0.000	0.000	0.000	0.000	0.000	0.000	0.000	0.000	0.000
03.Oct.16	0	0.000	0.000	0.000	0.000	0.000	0.000	0.008	0.000	0.000	0.000
04.Oct.16	0	0.000	0.000	0.000	0.000	0.000	0.009	0.065	0.000	0.000	0.000
05.Oct.16	0	0.000	0.000	0.000	0.000	0.000	0.000	0.000	0.000	0.000	0.000
06.Oct.16	0	0.000	0.000	0.000	0.000	0.000	0.000	0.008	0.010	0.000	0.000
07.Oct.16	0	0.000	0.000	0.000	0.000	0.000	0.000	0.000	0.000	0.000	0.000
08.Oct.16	0	0.000	0.000	0.000	0.000	0.000	0.000	0.000	0.000	0.000	0.000
09.Oct.16	0	0.000	0.000	0.000	0.000	0.000	0.000	0.000	0.000	0.000	0.000
10.Oct.16	0	0.000	0.000	0.000	0.000	0.000	0.000	0.000	0.000	0.000	0.000
11.Oct.16	0	0.000	0.000	0.000	0.000	0.000	0.000	0.000	0.000	0.000	0.000
12.Oct.16	0	0.000	0.000	0.000	0.000	0.000	0.000	0.008	0.000	0.000	0.000
13.Oct.16	0	0.000	0.000	0.000	0.000	0.000	0.000	0.016	0.000	0.000	0.000
14.Oct.16	0	0.000	0.000	0.000	0.000	0.000	0.000	0.000	0.000	0.000	0.000
15.Oct.16	0	0.000	0.000	0.000	0.000	0.000	0.000	0.000	0.000	0.000	0.000
16.Oct.16	0	0.000	0.000	0.000	0.000	0.000	0.000	0.000	0.000	0.000	0.000
17.Oct.16	0	0.000	0.000	0.000	0.000	0.000	0.000	0.000	0.000	0.000	0.000
18.Oct.16	0	0.000	0.000	0.000	0.000	0.000	0.000	0.000	0.000	0.000	0.000
19.Oct.16	0	0.000	0.000	0.000	0.000	0.000	0.000	0.000	0.000	0.000	0.000
20.Oct.16	0	0.000	0.000	0.000	0.000	0.000	0.000	0.006	0.000	0.000	0.000
21.Oct.16	0	0.000	0.000	0.000	0.000	0.000	0.000	0.000	0.016	0.000	0.000
22.Oct.16	0	0.000	0.000	0.000	0.000	0.000	0.000	0.000	0.000	0.000	0.000
23.Oct.16	0	0.000	0.000	0.000	0.000	0.000	0.000	0.000	0.000	0.000	0.000
24.Oct.16	0	0.000	0.000	0.000	0.000	0.000	0.000	0.000	0.000	0.000	0.000
25.Oct.16	0	0.000	0.000	0.000	0.000	0.000	0.000	0.000	0.000	0.000	0.000
26.Oct.16	0	0.000	0.000	0.000	0.000	0.000	0.000	0.000	0.000	0.000	0.000
27.Oct.16	0	0.000	0.000	0.000	0.000	0.000	0.000	0.000	0.000	0.000	0.000
28.Oct.16	0	0.000	0.000	0.000	0.000	0.000	0.000	0.000	0.000	0.000	0.000
29.Oct.16	0	0.000	0.000	0.000	0.000	0.000	0.000	0.000	0.000	0.000	0.000
30.Oct.16	0	0.000	0.000	0.000	0.000	0.000	0.000	0.000	0.000	0.000	0.000
31.Oct.16	0	0.000	0.000	0.000	0.000	0.000	0.000	0.000	0.000	0.000	0.000
TOTAL	5	0.023	0.667	0.000	0.000	0.690	0.009	0.111	0.026	0.000	0.000

ALL FIGURES IN MUS

Date	Shedding due to Transmission/Grid Constraints in Central Sector Stations / TTC / ATC VOILATION				DUE TO NEW GRID CODE REGULATION DEVIATION			Shedding due to Transmission/Grid Constraints in Central sector stations				Total 24=8 to 23	Total shedding due to grid restrictions 25=7+24	
	BSES		NDPL	NDMC	BSES		TPDDL	BSES		TPDDL	NDMC			
	BYPL	BRPL			BYPL	BRPL		BYPL	BRPL					
	13	14	15	16	17	18	19	20	21	22	23			
01.Oct.16	0.000	0.000	0.000	0.000	0.000	0.000	0.000	0.000	0.000	0.000	0.000	0.000	0.000	0.690
02.Oct.16	0.000	0.000	0.000	0.000	0.000	0.000	0.000	0.000	0.000	0.000	0.000	0.000	0.000	0.000
03.Oct.16	0.000	0.000	0.000	0.000	0.000	0.000	0.000	0.000	0.000	0.000	0.000	0.000	0.008	0.008
04.Oct.16	0.000	0.000	0.000	0.000	0.000	0.000	0.000	0.000	0.000	0.000	0.000	0.000	0.074	0.074
05.Oct.16	0.000	0.000	0.000	0.000	0.000	0.000	0.000	0.000	0.000	0.000	0.000	0.000	0.000	0.000
06.Oct.16	0.000	0.000	0.000	0.000	0.000	0.000	0.000	0.000	0.000	0.000	0.000	0.000	0.018	0.018
07.Oct.16	0.000	0.000	0.000	0.000	0.000	0.000	0.000	0.000	0.000	0.000	0.000	0.000	0.000	0.000
08.Oct.16	0.000	0.000	0.000	0.000	0.000	0.000	0.000	0.000	0.000	0.000	0.000	0.000	0.000	0.000
09.Oct.16	0.000	0.000	0.000	0.000	0.000	0.000	0.000	0.000	0.000	0.000	0.000	0.000	0.000	0.000
10.Oct.16	0.000	0.000	0.000	0.000	0.000	0.000	0.000	0.000	0.000	0.000	0.000	0.000	0.000	0.000
11.Oct.16	0.000	0.000	0.000	0.000	0.000	0.000	0.000	0.000	0.000	0.000	0.000	0.000	0.000	0.000
12.Oct.16	0.000	0.000	0.000	0.000	0.000	0.000	0.000	0.000	0.000	0.000	0.000	0.000	0.008	0.008
13.Oct.16	0.000	0.000	0.000	0.000	0.000	0.000	0.000	0.000	0.000	0.000	0.000	0.000	0.016	0.016
14.Oct.16	0.000	0.000	0.000	0.000	0.000	0.000	0.000	0.000	0.000	0.000	0.000	0.000	0.000	0.000
15.Oct.16	0.000	0.000	0.000	0.000	0.000	0.000	0.000	0.000	0.000	0.000	0.000	0.000	0.000	0.000
16.Oct.16	0.000	0.000	0.000	0.000	0.000	0.000	0.000	0.000	0.000	0.000	0.000	0.000	0.000	0.000
17.Oct.16	0.000	0.000	0.000	0.000	0.000	0.000	0.000	0.000	0.000	0.000	0.000	0.000	0.000	0.000
18.Oct.16	0.000	0.000	0.000	0.000	0.000	0.000	0.000	0.000	0.000	0.000	0.000	0.000	0.000	0.000
19.Oct.16	0.000	0.000	0.000	0.000	0.000	0.000	0.000	0.000	0.000	0.000	0.000	0.000	0.000	0.000
20.Oct.16	0.000	0.000	0.000	0.000	0.000	0.000	0.000	0.000	0.000	0.000	0.000	0.000	0.006	0.006
21.Oct.16	0.000	0.000	0.000	0.000	0.000	0.000	0.000	0.000	0.000	0.000	0.000	0.000	0.016	0.016
22.Oct.16	0.000	0.000	0.000	0.000	0.000	0.000	0.000	0.000	0.000	0.000	0.000	0.000	0.000	0.000
23.Oct.16	0.000	0.000	0.000	0.000	0.000	0.000	0.000	0.000	0.000	0.000	0.000	0.000	0.000	0.000
24.Oct.16	0.000	0.000	0.000	0.000	0.000	0.000	0.000	0.000	0.000	0.000	0.000	0.000	0.000	0.000
25.Oct.16	0.000	0.000	0.000	0.000	0.000	0.000	0.000	0.000	0.000	0.000	0.000	0.000	0.000	0.000
26.Oct.16	0.000	0.000	0.000	0.000	0.000	0.000	0.000	0.000	0.000	0.000	0.000	0.000	0.000	0.000
27.Oct.16	0.000	0.000	0.000	0.000	0.000	0.000	0.000	0.000	0.000	0.000	0.000	0.000	0.000	0.000
28.Oct.16	0.000	0.000	0.000	0.000	0.000	0.000	0.000	0.000	0.000	0.000	0.000	0.000	0.000	0.000
29.Oct.16	0.000	0.000	0.000	0.000	0.000	0.000	0.000	0.000	0.000	0.000	0.000	0.000	0.000	0.000
30.Oct.16	0.000	0.000	0.000	0.000	0.000	0.000	0.000	0.000	0.000	0.000	0.000	0.000	0.000	0.000
31.Oct.16	0.000	0.000	0.000	0.000	0.000	0.000	0.000	0.000	0.000	0.000	0.000	0.000	0.000	0.000
TOTAL	0.000	0.000	0.000	0.000	0.000	0.000	0.000	0.000	0.000	0.000	0.000	0.000	0.146	0.836

Date	DUE TO T&D CONSTRAINTS IN DELHI SYSTEM								
	DTL					DISCOMS			
	BSES		NDPL	NDMC	MES	BSES		NDPL	NDMC
	BYPL	BRPL				BYPL	BRPL		
26	27	28	29	30	31	32	33	34	
01.Oct.16	0.000	0.000	0.000	0.000	0.000	0.007	0.016	0.000	0.000
02.Oct.16	0.000	0.014	0.000	0.000	0.000	0.002	0.000	0.000	0.000
03.Oct.16	0.000	0.000	0.003	0.000	0.000	0.000	0.000	0.000	0.000
04.Oct.16	0.002	0.004	0.000	0.000	0.000	0.000	0.162	0.021	0.000
05.Oct.16	0.000	0.000	0.000	0.000	0.000	0.000	0.045	0.000	0.000
06.Oct.16	0.000	0.000	0.003	0.000	0.000	0.000	0.018	0.004	0.000
07.Oct.16	0.000	0.027	0.001	0.000	0.000	0.001	0.008	0.000	0.000
08.Oct.16	0.023	0.046	0.006	0.000	0.000	0.000	0.027	0.003	0.000
09.Oct.16	0.000	0.016	0.000	0.000	0.000	0.006	0.023	0.000	0.000
10.Oct.16	0.000	0.000	0.000	0.000	0.000	0.006	0.005	0.000	0.000
11.Oct.16	0.000	0.000	0.000	0.000	0.000	0.000	0.033	0.001	0.000
12.Oct.16	0.000	0.000	0.000	0.000	0.000	0.000	0.005	0.000	0.000
13.Oct.16	0.000	0.000	0.000	0.000	0.000	0.000	0.002	0.001	0.000
14.Oct.16	0.000	0.000	0.000	0.000	0.000	0.006	0.016	0.000	0.000
15.Oct.16	0.000	0.000	0.001	0.000	0.000	0.003	0.008	0.000	0.000
16.Oct.16	0.000	0.000	0.000	0.000	0.000	0.000	0.000	0.009	0.000
17.Oct.16	0.000	0.000	0.000	0.000	0.000	0.000	0.000	0.000	0.000
18.Oct.16	0.000	0.000	0.000	0.000	0.000	0.000	0.016	0.000	0.000
19.Oct.16	0.000	0.055	0.000	0.000	0.000	0.000	0.000	0.001	0.000
20.Oct.16	0.000	0.001	0.000	0.000	0.000	0.004	0.000	0.000	0.000
21.Oct.16	0.000	0.000	0.000	0.000	0.000	0.000	0.016	0.001	0.000
22.Oct.16	0.000	0.000	0.000	0.000	0.000	0.0001	0.000	0.000	0.000
23.Oct.16	0.000	0.000	0.000	0.000	0.000	0.001	0.000	0.000	0.000
24.Oct.16	0.000	0.000	0.000	0.000	0.000	0.011	0.000	0.000	0.000
25.Oct.16	0.000	0.000	0.000	0.000	0.000	0.000	0.000	0.000	0.000
26.Oct.16	0.000	0.000	0.000	0.000	0.000	0.000	0.008	0.005	0.000
27.Oct.16	0.000	0.000	0.000	0.000	0.000	0.019	0.000	0.003	0.000
28.Oct.16	0.000	0.000	0.000	0.000	0.000	0.000	0.012	0.000	0.000
29.Oct.16	0.000	0.074	0.000	0.000	0.000	0.001	0.004	0.000	0.000
30.Oct.16	0.000	0.000	0.000	0.000	0.000	0.000	0.000	0.000	0.000
31.Oct.16	0.000	0.000	0.000	0.000	0.000	0.000	0.000	0.001	0.000
TOTAL	0.025	0.237	0.014	0.000	0.000	0.067	0.424	0.050	0.000

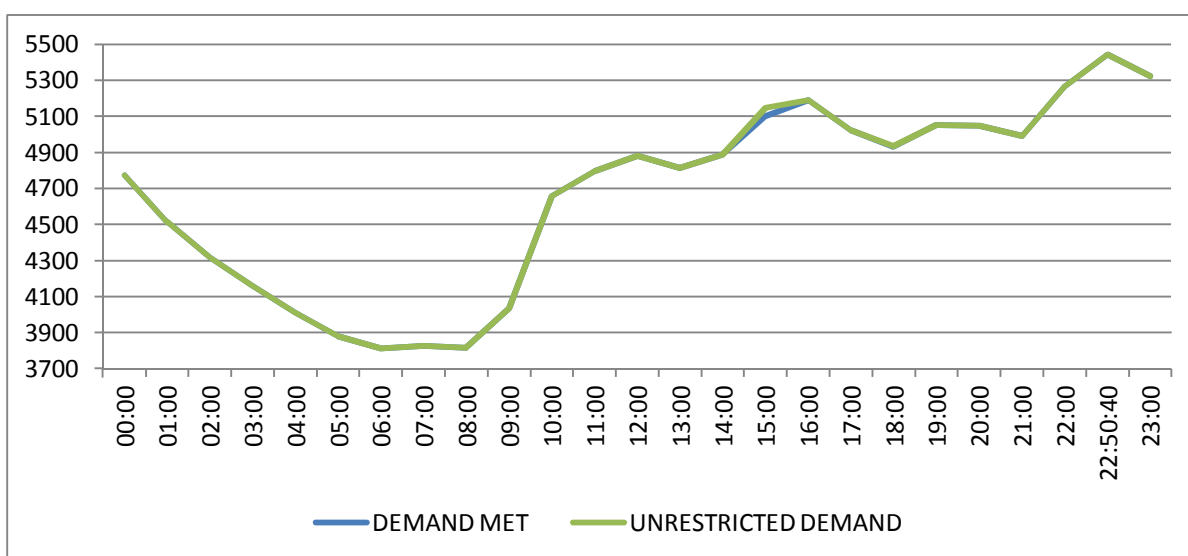
DATE	OTHER AGENCIES LIKE GENCO, BBMB, BTPS ETC.				THEFT PRONE SHEDDING			TOTAL SHEDDING DUE TO T&D CONSTS. & THEFT PRONE	GRAND TOTAL
	BSES		NDPL	NDMC	BSES		NDPL		
	BYPL	BRPL			BYPL	BRPL			
1	35	36	37	38	39	40	41	42= 26 to 41	43 = 25 + 42
01.Oct.16	0.079	0.273	0.000	0.000	0.000	0.000	0.000	0.375	1.065
02.Oct.16	0.000	0.000	0.000	0.000	0.000	0.000	0.000	0.016	0.016
03.Oct.16	0.000	0.000	0.000	0.000	0.000	0.000	0.018	0.021	0.029
04.Oct.16	0.000	0.000	0.000	0.000	0.000	0.000	0.000	0.189	0.263
05.Oct.16	0.000	0.000	0.000	0.000	0.000	0.000	0.000	0.045	0.045
06.Oct.16	0.000	0.000	0.000	0.000	0.000	0.000	0.000	0.025	0.043
07.Oct.16	0.000	0.000	0.000	0.000	0.000	0.000	0.017	0.054	0.054
08.Oct.16	0.000	0.000	0.000	0.000	0.000	0.000	0.000	0.105	0.105
09.Oct.16	0.000	0.000	0.000	0.000	0.000	0.000	0.000	0.045	0.045
10.Oct.16	0.000	0.000	0.000	0.000	0.000	0.000	0.000	0.011	0.011
11.Oct.16	0.000	0.000	0.000	0.000	0.000	0.000	0.000	0.034	0.034
12.Oct.16	0.000	0.000	0.000	0.000	0.000	0.000	0.000	0.005	0.013
13.Oct.16	0.000	0.000	0.000	0.000	0.000	0.000	0.000	0.003	0.019
14.Oct.16	0.000	0.000	0.000	0.000	0.000	0.000	0.000	0.022	0.022
15.Oct.16	0.000	0.000	0.000	0.000	0.000	0.000	0.000	0.012	0.012
16.Oct.16	0.000	0.000	0.000	0.000	0.000	0.000	0.000	0.009	0.009
17.Oct.16	0.000	0.000	0.000	0.000	0.000	0.000	0.000	0.000	0.000
18.Oct.16	0.000	0.000	0.000	0.000	0.000	0.000	0.000	0.016	0.016
19.Oct.16	0.000	0.000	0.000	0.000	0.000	0.000	0.000	0.056	0.056
20.Oct.16	0.000	0.000	0.000	0.000	0.000	0.000	0.014	0.019	0.025
21.Oct.16	0.000	0.000	0.000	0.000	0.000	0.000	0.010	0.027	0.043
22.Oct.16	0.000	0.000	0.000	0.000	0.000	0.000	0.000	0.000	0.0001
23.Oct.16	0.000	0.000	0.000	0.000	0.000	0.000	0.000	0.001	0.001
24.Oct.16	0.000	0.000	0.000	0.000	0.000	0.000	0.000	0.011	0.011
25.Oct.16	0.000	0.000	0.000	0.000	0.000	0.000	0.000	0.000	0.000
26.Oct.16	0.000	0.000	0.000	0.000	0.000	0.000	0.000	0.013	0.013
27.Oct.16	0.000	0.000	0.000	0.000	0.000	0.000	0.000	0.022	0.022
28.Oct.16	0.000	0.000	0.000	0.000	0.000	0.000	0.000	0.012	0.012
29.Oct.16	0.000	0.000	0.000	0.000	0.000	0.000	0.000	0.079	0.079
30.Oct.16	0.000	0.000	0.001	0.000	0.000	0.000	0.000	0.001	0.001
31.Oct.16	0.000	0.000	0.000	0.000	0.000	0.000	0.000	0.001	0.001
TOTAL	0.079	0.273	0.001	0.000	0.000	0.000	0.059	1.229	2.065

DATE	(NET CONS.)	MAXI. DEMAND MET DURING THE DAY	TIME OF OCCURRENCE OF MAX DEMAND	SHEDDING AT THIS TIME	UN-RESTRICTED DEMAND	MAXIMUM UN-RESTRICTED DEMAND DURING THE DAY	TIME OF MAX. UN-REST. DEMAND	DEMAND AT THAT TIME	SHEDDING AT THAT TIME
	In Mus.	IN MW	IN HRS.	IN MW	IN MW	IN MW	HRS.	IN MW	IN MW
1	32	33	34	35	36=33+35	37=39+40	38	39	40
01.Oct.16	108.468	5145	22:34:43	0	5145	5145	22:34:43	5145	0
02.Oct.16	99.380	5045	00:00:12	0	5045	5045	00:00:12	5045	0
03.Oct.16	112.223	5442	22:50:40	0	5442	5442	22:50:40	5442	0
04.Oct.16	109.662	5221	00:00:00	0	5221	5221	00:00:00	5221	0
05.Oct.16	99.661	4669	19:04:01	0	4669	4669	19:04:01	4669	0
06.Oct.16	102.559	4811	15:37:01	0	4811	4811	15:37:01	4811	0
07.Oct.16	101.341	4765	15:20:42	0	4765	4765	15:20:42	4765	0
08.Oct.16	97.050	4483	00:00:19	0	4483	4483	00:00:19	4483	0
09.Oct.16	92.127	4307	23:20:05	0	4307	4307	23:20:05	4307	0
10.Oct.16	93.098	4342	18:36:20	0	4342	4342	18:36:20	4342	0
11.Oct.16	77.239	4102	00:00:20	0	4102	4102	00:00:20	4102	0
12.Oct.16	83.886	3970	19:06:21	0	3970	3970	19:06:21	3970	0
13.Oct.16	86.937	4205	18:30:53	0	4205	4205	18:30:53	4205	0
14.Oct.16	86.155	4211	18:20:47	0	4211	4211	18:20:47	4211	0
15.Oct.16	79.693	3903	18:28:12	0	3903	3903	18:28:12	3903	0
16.Oct.16	73.527	3627	18:34:19	0	3627	3627	18:34:19	3627	0
17.Oct.16	79.567	3921	18:16:41	0	3921	3921	18:16:41	3921	0
18.Oct.16	78.446	3952	18:30:19	0	3952	3952	18:30:19	3952	0
19.Oct.16	76.270	3844	18:21:39	0	3844	3844	18:21:39	3844	0
20.Oct.16	80.024	4038	18:16:29	0	4038	4038	18:16:29	4038	0
21.Oct.16	78.825	4073	18:18:23	0	4073	4073	18:18:23	4073	0
22.Oct.16	75.460	3847	18:45:32	0	3847	3847	18:45:32	3847	0
23.Oct.16	72.723	3523	18:15:30	0	3523	3523	18:15:30	3523	0
24.Oct.16	75.215	3913	18:30	0	3913	3913	18:30	3913	0
25.Oct.16	77.767	3955	18:31:02	0	3955	3955	18:31:02	3955	0
26.Oct.16	80.387	3863	18:29:46	0	3863	3863	18:29:46	3863	0
27.Oct.16	78.040	3863	18:29:46	0	3863	3863	18:29:46	3863	0
28.Oct.16	72.855	3741	18:19:56	0	3741	3741	18:19:56	3741	0
29.Oct.16	70.336	3348	10:59:14	0	3348	3348	10:59:14	3348	0
30.Oct.16	62.795	2890	18:40:18	0	2890	2890	18:40:18	2890	0
31.Oct.16	57.883	2888	18:20:56	0	2888	2888	18:20:56	2888	0
TOTAL	2619.599	5442	22:50:39	0	5442	5442	22:50:39	5442	0
		03.10.2016			03.10.2016				

LOAD PATTERN OF DELHI ON THE DAY OF PEAK DEMAND MET DURING OCTOBER 2016 ON 03.10.2016- 5442MW AT 22.50.40HRS.

All figures in MW

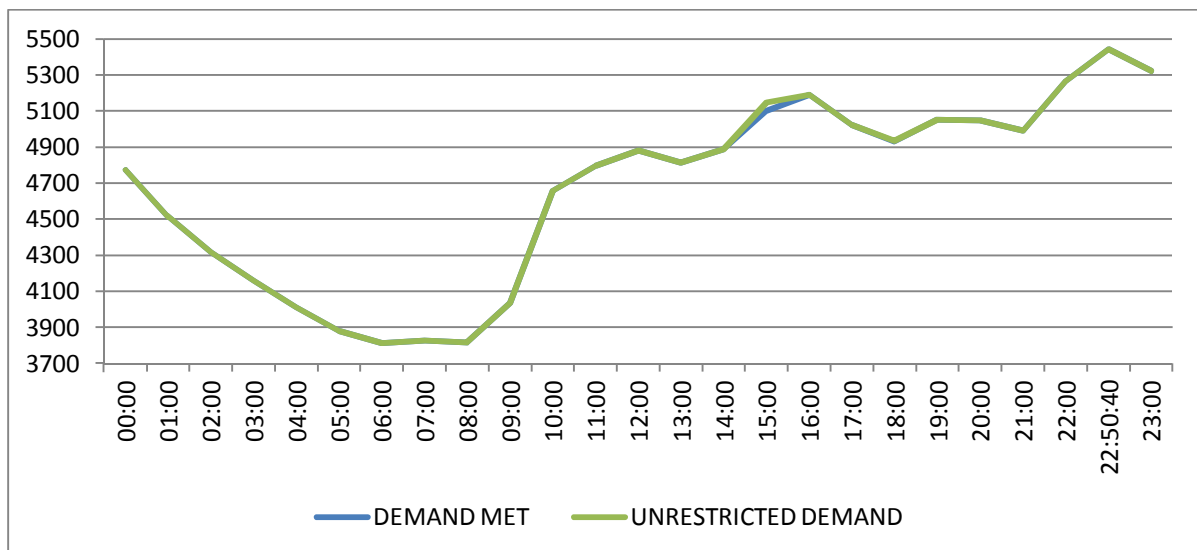
Hrs.	Demand	Load Shedding	Un-Restricted Demand
00:00	4774	0	4774
01:00	4515	0	4515
02:00	4318	0	4318
03:00	4163	0	4163
04:00	4013	0	4013
05:00	3879	0	3879
06:00	3812	0	3812
07:00	3829	0	3829
08:00	3817	0	3817
09:00	4033	0	4033
10:00	4658	0	4658
11:00	4797	0	4797
12:00	4880	0	4880
13:00	4814	0	4814
14:00	4889	0	4889
15:00	5102	44	5146
16:00	5190	0	5190
17:00	5025	0	5025
18:00	4931	4	4935
19:00	5052	0	5052
20:00	5047	0	5047
21:00	4993	0	4993
22:00	5264	0	5264
22:50:40	5442	0	5442
23:00	5321	0	5321
Total (IN MUS)	112.223	0.029	112.252



11 LOAD PATTERN OF DELHI ON THE DAY OF MAXIMUM UN-RESTRICTED DEMAND DURING OCTOBER 2016 ON 03.10.2016-5442MW AT 22.50.40HRS.

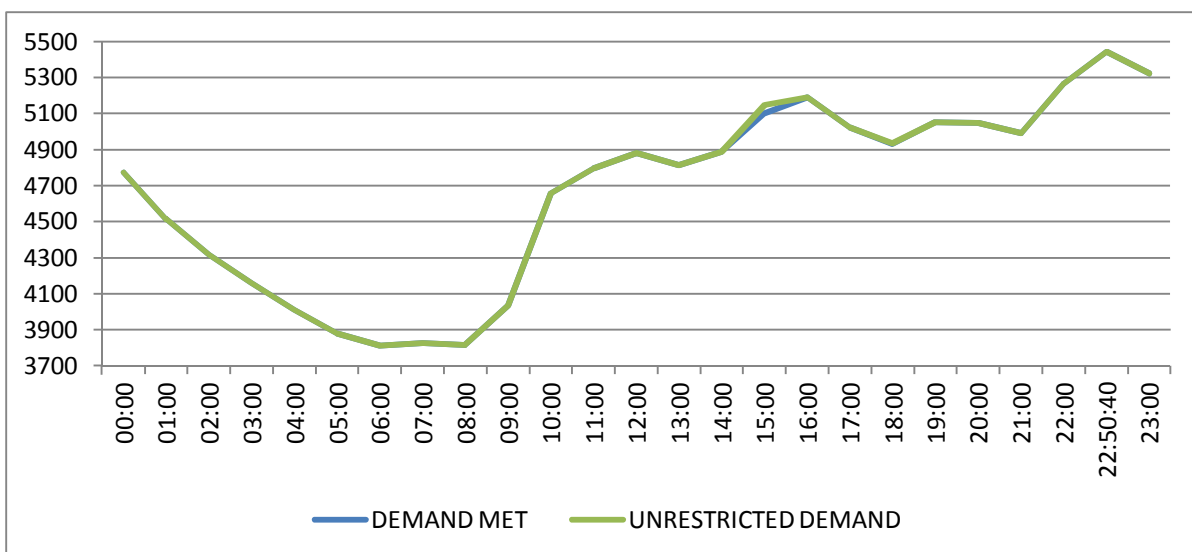
All figures in MW

Hrs.	Demand	Load Shedding	Un-Restricted Demand
00:00	4774	0	4774
01:00	4515	0	4515
02:00	4318	0	4318
03:00	4163	0	4163
04:00	4013	0	4013
05:00	3879	0	3879
06:00	3812	0	3812
07:00	3829	0	3829
08:00	3817	0	3817
09:00	4033	0	4033
10:00	4658	0	4658
11:00	4797	0	4797
12:00	4880	0	4880
13:00	4814	0	4814
14:00	4889	0	4889
15:00	5102	44	5146
16:00	5190	0	5190
17:00	5025	0	5025
18:00	4931	4	4935
19:00	5052	0	5052
20:00	5047	0	5047
21:00	4993	0	4993
22:00	5264	0	5264
22:50:40	5442	0	5442
23:00	5321	0	5321
Total (IN MUS)	112.223	0.029	112.252



**12 LOAD PATTERN OF DELHI ON THE DAY OF MAXIMUM ENERGY CONSUMED
DURING OCTOBER 2016 – 03.10.2016 – 112.223Mus All figures in MW**

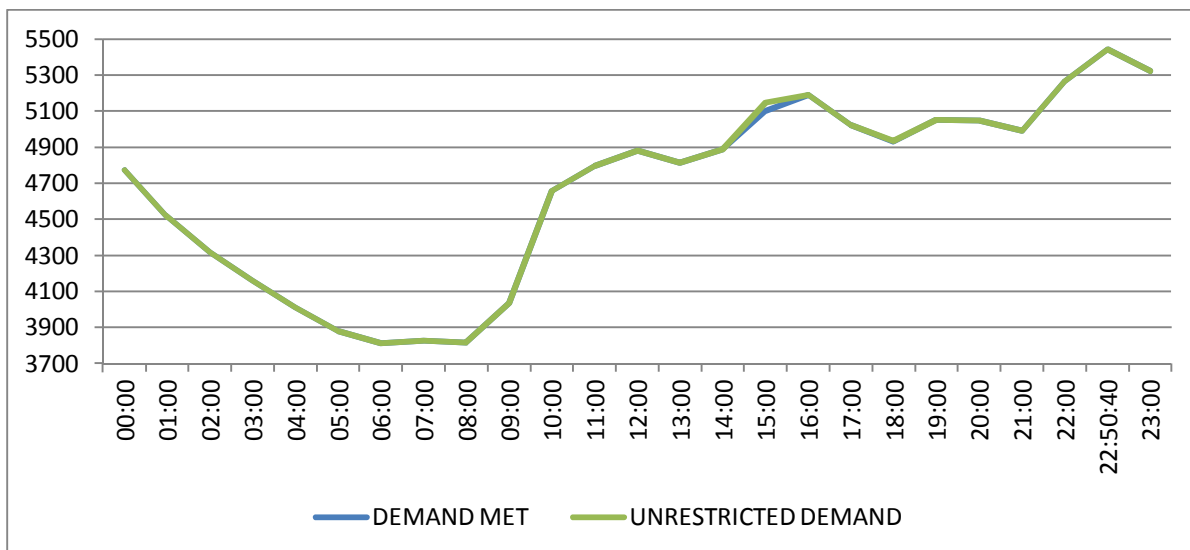
Hrs.	Demand	Load Shedding	Un-Restricted Demand
00:00	4774	0	4774
01:00	4515	0	4515
02:00	4318	0	4318
03:00	4163	0	4163
04:00	4013	0	4013
05:00	3879	0	3879
06:00	3812	0	3812
07:00	3829	0	3829
08:00	3817	0	3817
09:00	4033	0	4033
10:00	4658	0	4658
11:00	4797	0	4797
12:00	4880	0	4880
13:00	4814	0	4814
14:00	4889	0	4889
15:00	5102	44	5146
16:00	5190	0	5190
17:00	5025	0	5025
18:00	4931	4	4935
19:00	5052	0	5052
20:00	5047	0	5047
21:00	4993	0	4993
22:00	5264	0	5264
22:50:40	5442	0	5442
23:00	5321	0	5321
Total (IN MUS)	112.223	0.029	112.252



13 LOAD PATTERN OF DELHI ON THE DAY OF MAXIMUM UNRESTRICTED ENERGY DEMAND DURING OCTOBER 2016 – 03.10.2016 – 112.252 Mus

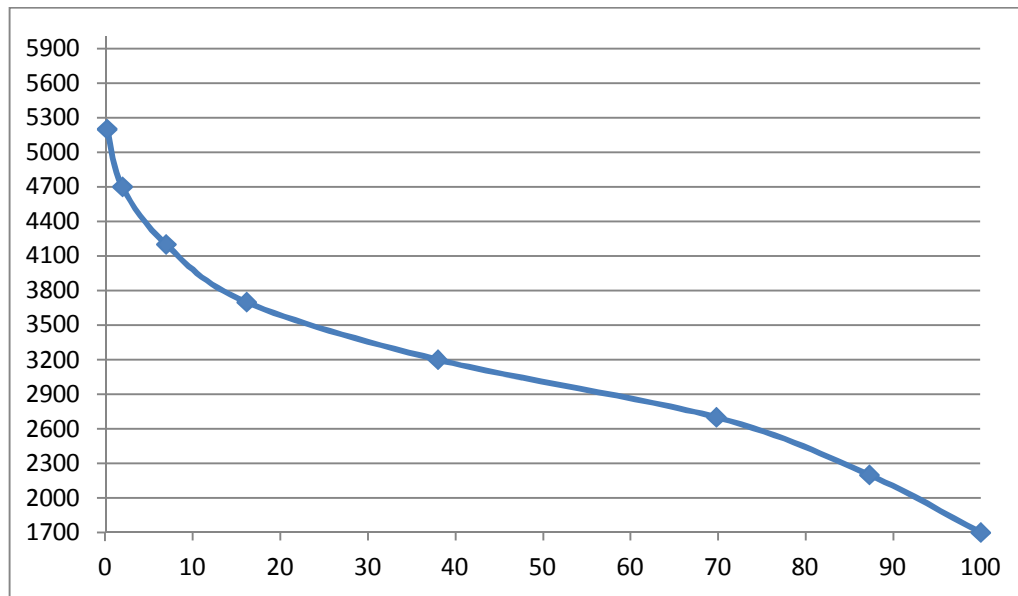
All figures in MW

Hrs.	Demand	Load Shedding	Un-Restricted Demand
00:00	4774	0	4774
01:00	4515	0	4515
02:00	4318	0	4318
03:00	4163	0	4163
04:00	4013	0	4013
05:00	3879	0	3879
06:00	3812	0	3812
07:00	3829	0	3829
08:00	3817	0	3817
09:00	4033	0	4033
10:00	4658	0	4658
11:00	4797	0	4797
12:00	4880	0	4880
13:00	4814	0	4814
14:00	4889	0	4889
15:00	5102	44	5146
16:00	5190	0	5190
17:00	5025	0	5025
18:00	4931	4	4935
19:00	5052	0	5052
20:00	5047	0	5047
21:00	4993	0	4993
22:00	5264	0	5264
22:50:40	5442	0	5442
23:00	5321	0	5321
Total (IN MUS)	112.223	0.029	112.252



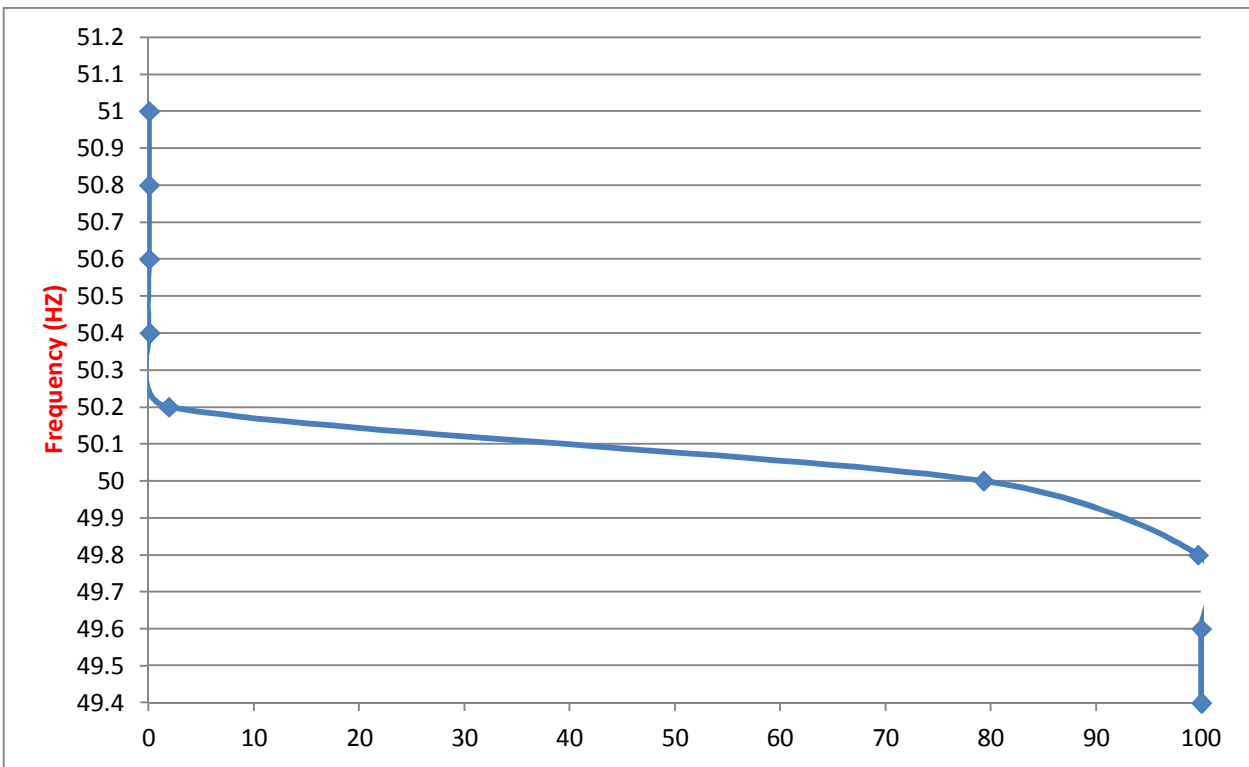
14 **LOAD DURATION CURVE FOR OCTOBER 2016**

Load in MW	Percentage of Time
Above 5200	0.17
Above 4700	1.95
Above 4200	6.94
Above 3700	16.11
Above 3200	37.96
Above 2700	69.78
Above 2200	87.27
Above 1700	100.00



FREQUENCY ANALYSIS FOR THE MONTH OF OCTOBER 2016

Frequency Range in Hz.	Percentage of time
Above 51.0	0.01
Above 50.8	0.01
Above 50.6	0.02
Above 50.4	0.07
Above 50.2	1.89
Above 50	79.30
Above 49.8	99.68
Above 49.6	99.98
Above 49.4	99.99



16 VOLTAGE PROFILE OF 220 KV SUB-STATIONS IN DELHI DURING OCTOBER 2016

All figures in kV

Date	NARELA		GAZIPUR	
	Max	Min	Max	Min
01.Oct.16	220.5	220.5	212.8	191.9
02.Oct.16	220.5	220.5	214.3	200.8
03.Oct.16	221.4	214.7	207.4	197.1
04.Oct.16	226.2	215	211.3	194.4
05.Oct.16	228.3	214	213.1	196.4
06.Oct.16	226.3	211.1	212.7	193.7
07.Oct.16	220.8	213.2	210	194.7
08.Oct.16	226.2	213.8	219.1	199
09.Oct.16	226.6	215.8	199.1	199.1
10.Oct.16	226.6	214.7	211.8	199.1
11.Oct.16	226.2	221.7	217.3	206.4
12.Oct.16	226.2	226.2	216.4	198.2
13.Oct.16	226.2	216.7	215.4	199.1
14.Oct.16	228.9	216.3	219.6	198.9
15.Oct.16	228.3	216.4	217.6	199
16.Oct.16	228.9	225.7	217.3	202.7
17.Oct.16	227.2	216.5	216.5	200.2
18.Oct.16	230.7	217.8	221.8	202.4
19.Oct.16	231.1	215.8	222.9	200.5
20.Oct.16	230.6	216.5	221.4	204.7
21.Oct.16	231.1	215.4	222.5	204
22.Oct.16	229.2	216.4	220.5	203.6
23.Oct.16	226.9	226	222.5	212.5
24.Oct.16	228.1	218.2	219.5	205.6
25.Oct.16	230	216.3	222.9	203.4
26.Oct.16	230.7	217.3	223	199.6
27.Oct.16	231.9	217.3	220.8	200.4
28.Oct.16	231.5	215.8	220.4	197.1
29.Oct.16	232.1	217.8	219.5	198.6
30.Oct.16	232.8	223	224.9	206.7
31.Oct.16	233.4	220.8	222.1	206.9

17 VOLTAGE PROFILE OF 400 KV SUB-STATIONS IN DELHI DURING OCTOBER 2016

All figures in kV

Date	400kV Bamnauli Grid Sub-Station				
	Max KV	Max Time	Min KV	Min Time	Average KV
01.Oct.16	407.77	17:08:08	390.89	12:25:57	399.16
02.Oct.16	410.82	17:01:43	391.36	00:06:20	402.05
03.Oct.16	407.3	07:03:35	389.01	18:42:13	398.7
04.Oct.16	408.94	07:05:39	389.95	12:12:46	399.98
05.Oct.16	411.06	02:50:27	391.59	12:02:44	403.04
06.Oct.16	409.18	02:57:17	381.51	14:34:59	399.97
07.Oct.16	409.18	03:59:51	390.42	14:41:23	399.77
08.Oct.16	410.82	08:03:06	391.36	18:39:48	402.59
09.Oct.16	411.99	07:51:50	394.41	18:38:22	405.07
10.Oct.16	410.35	03:59:44	392.3	14:49:16	402.59
11.Oct.16	415.04	07:06:49	400.5	18:48:21	408.07
12.Oct.16	415.74	04:00:12	389.01	18:47:05	403.44
13.Oct.16	413.63	03:59:47	389.95	18:37:49	402.2
14.Oct.16	411.99	02:46:10	393.47	09:18:51	402.79
15.Oct.16	411.29	03:59:45	392.06	18:41:08	403.36
16.Oct.16	413.4	04:00:08	396.99	18:53:53	406.69
17.Oct.16	411.99	21:50:06	394.64	11:49:44	403.64
18.Oct.16	413.63	02:58:16	396.05	14:52:48	405.4
19.Oct.16	415.51	02:59:30	393.47	14:41:14	405.14
20.Oct.16	415.74	04:00:54	396.28	14:49:06	406.44
21.Oct.16	415.74	03:58:58	395.11	18:41:31	405.55
22.Oct.16	412.46	04:01:12	393.7	14:54:35	404.41
23.Oct.16	413.87	17:03:08	398.63	11:18:57	407.61
24.Oct.16	415.04	02:59:30	396.28	11:11:51	405.2
25.Oct.16	413.63	02:57:04	397.45	18:11:46	405.54
26.Oct.16	414.34	02:03:08	395.58	11:21:40	405.56
27.Oct.16	414.57	02:57:22	397.45	18:50:54	406.46
28.Oct.16	413.87	21:52:08	392.3	12:17:57	404.28
29.Oct.16	416.21	02:45:30	393.47	12:14:02	406.86
30.Oct.16	416.68	16:01:35	402.14	18:12:35	410.48
31.Oct.16	417.86	02:55:57	400.5	18:35:29	411.06

All figures in kV

Date	400kV Bawana Grid Sub-Station				
	Max KV	Max Time	Min KV	Min Time	Average KV
01.Oct.16	415.04	6:09:55	399.1	18:43:57	407.13
02.Oct.16	419.03	17:04:13	403.32	19:50:53	410.5
03.Oct.16	415.51	7:05:36	0	11:38:17	262.66
04.Oct.16	415.04	7:04:13	393.23	11:53:31	405.37
05.Oct.16	418.09	2:52:45	397.92	18:43:10	408.32
06.Oct.16	417.15	2:55:42	393.47	14:32:51	406.68
07.Oct.16	415.74	2:57:28	395.58	14:47:13	405.9
08.Oct.16	415.98	4:02:48	398.16	18:39:40	408.61
09.Oct.16	419.5	8:03:45	401.44	18:40:08	412.61
10.Oct.16	419.26	3:59:36	398.63	14:50:49	410.26
11.Oct.16	421.84	7:09:15	408.71	18:35:48	416.07
12.Oct.16	423.72	3:59:28	398.16	18:47:09	411.82
13.Oct.16	423.25	4:02:42	401.68	14:48:30	412.23
14.Oct.16	422.55	2:09:03	399.1	12:15:33	410.76
15.Oct.16	420.67	3:59:53	399.8	18:41:58	412.4
16.Oct.16	422.78	4:02:19	404.25	11:46:54	415.46
17.Oct.16	420.9	1:11:36	399.8	18:39:23	411.82
18.Oct.16	422.78	2:58:37	401.44	14:53:26	412.99
19.Oct.16	423.25	2:59:50	400.27	11:37:37	411.61
20.Oct.16	420.67	21:58:20	402.61	18:38:41	410.65
21.Oct.16	425.36	3:58:52	399.57	18:42:23	414.15
22.Oct.16	423.01	3:00:12	402.14	18:39:12	413.8
23.Oct.16	422.08	2:48:05	408.01	11:18:25	417.32
24.Oct.16	425.12	1:58:43	403.08	18:39:49	414.24
25.Oct.16	422.55	2:45:48	404.02	18:14:28	413.53
26.Oct.16	424.89	2:02:58	403.32	18:39:18	414.33
27.Oct.16	426.06	2:55:57	403.79	18:30:34	415.7
28.Oct.16	425.12	1:59:47	400.27	11:44:22	413.14
29.Oct.16	426.77	2:45:35	404.25	18:23:58	416.41
30.Oct.16	427.47	2:55:04	412.23	18:14:08	421.4
31.Oct.16	428.64	2:55:52	408.94	18:36:24	421.55

18 DETAILS OF LUMPED CAPACITORS AT NEAREST 220 KV SUBSTATION

Sl. No	SUB-STATION	INSTALLED CAPACITY			
		66KV	33kV	11kV	TOTAL
1	IP YARD		30.00		30.00
1	Kamla Market			16.35	16.35
2	Minto Road				0.00
3	GB Pant Hosp			10.48	10.48
4	Delhi Gate			16.30	16.30
5	Tilakmarg			5.04	5.04
7	Cannaught Place			10.08	10.08
8	Kilokri		10.08	10.48	20.56
9	NDSE-II				0.00
11	Nizamuddin				0.00
12	Exhibition-I				0.00
13	Exhibition-II				0.00
14	Defence Colony				0.00
15	IG Stadium		10.08	5.45	15.53
16	Lajpat Nagar				0.00
17	IP Estate			10.90	10.90
		0.00	50.16	85.08	135.24
2	Electric Lane				
1	Electric Lane			5.04	5.04
2	Scindia House			10.44	10.44
3	Mandi House			10.80	10.80
4	Raisina Road			10.08	10.08
5	Raja Bazar			10.08	10.08
		0.00	0.00	46.44	46.44
3	RPH Station		20.00		20.00
1	Lahori Gate			10.49	10.49
2	Jama Masjid			10.48	10.48
4	Kamla Market				0.00
5	Minto Road			10.90	10.90
6	GB Pant Hosp				0.00
7	IG Stadium				0.00
		0.00	20.00	31.87	51.87
4	Parkstreet S/stn	20.00	20.00		40.00
1	Shastri Park		10.90	5.45	16.35
2	Faiz Road			18.05	18.05
3	Motia Khan			16.30	16.30
4	Prasad Nagar			16.25	16.25
5	Anand Parbat			10.80	10.80
6	Shankar Road			10.44	10.44
7	Rama Road			0.00	0.00
8	Baird Road			10.08	10.08
9	Hanuman Road			10.08	10.08
10	Pusa			5.44	5.44
11	Ridge Valley			0.00	0.00
12	B. D. Marg			5.40	5.40
13	Nirman Bhawan			5.04	5.04
		20.00	30.90	113.33	164.23
5	Naraina S/stn		20.00	5.04	25.04
1	DMS			10.85	10.85
2	Mayapuri		10.87	10.40	21.27
3	Inderpuri		13.26	5.04	18.30
4	Rewari line				0.00
5	Khyber Lane		10.05		10.05
6	Kirbi Place		10.05		10.05
7	Payal			10.08	10.08
8	A-21 Naraina			4.80	4.80
8	Saraswati Garden			10.08	10.08
		0.00	64.23	56.29	120.52

Sl. No	SUB-STATION	INSTALLED CAPACITY			
		66KV	33kV	11kV	TOTAL
6	Mehrauli S/stn	80.00		5.04	85.04
1	Adchini			14.61	14.61
2	Andheria Bagh			10.85	10.85
3	IIT			10.90	10.90
4	JNU		10.03	10.03	20.06
5	Bijwasan			15.47	15.47
6	DC Saket		10.08	9.98	20.06
7	Malviya Nagar				0.00
8	C Dot			10.48	10.48
9	Vasant kunj B-Blk	21.79		10.90	32.69
10	Vasant kunj C-Blk	20.16		10.48	30.64
11	Palam				0.00
12	IGNOU			5.04	5.04
13	R. K. Puram-I			10.07	10.07
14	Vasant Vihar			19.25	19.25
15	Pusp Vihar			10.44	10.44
16	Bhikaji Cama Place		10.08	10.07	20.15
		121.95	30.19	163.61	315.75
7	Vasantkunj S/stn	40.00		5.04	45.04
1	R. K. Puram-II			10.80	10.80
2	Vasant kunj C-Blk				0.00
3	Vasant kunj D-Blk			9.63	9.63
4	Ridge Valley				0.00
		40.00	0.00	25.47	65.47
8	Okhla S/stn	60.00	10.00	5.04	75.04
1	Balaji			10.80	10.80
2	East of Kailash			15.89	15.89
3	Alaknanda			16.30	16.30
4	Malviya Nagar	21.79	20.16	10.85	52.80
5	Masjid Moth			16.30	16.30
6	Nehru Place			21.34	21.34
7	Okhla Ph-I	21.79		16.30	38.09
8	Okhla Ph-II		20.93	15.47	36.40
9	Shivalik			10.80	10.80
10	Batra			15.90	15.90
11	VSNL			10.90	10.90
12	Siri Fort			10.49	10.49
13	Tuglakabad			10.85	10.85
		103.58	51.09	187.23	341.90
9	Lodhi Road S/stn			20.00	20.00
1	Defence Colony			14.85	14.85
2	Hudco			10.90	10.90
3	Lajpat Nagar			10.90	10.90
4	Nizamuddin			10.44	10.44
5	Vidyut Bhawan (Shahjahan Rd)			10.80	10.80
6	Ex. Gr. II			0.00	0.00
7	IHC			0.00	0.00
		0.00	0.00	77.89	77.89
10	Sarita Vihar S/stn	20.00		5.04	25.04
1	Sarita Vihar			10.07	10.07
2	MCIE			10.06	10.06
3	Mathura Road	20.16		11.69	31.85
4	Jamia Millia			10.89	10.89
5	Sarai Julena		10.08	16.29	26.37
6	Jasola			5.44	5.44
		40.16	10.08	69.48	119.72

Sl. No	SUB-STATION	INSTALLED CAPACITY			
		66KV	33kV	11kV	TOTAL
11	Wazirabad				
1	Bhagirathi		14.40	18.10	32.50
2	Ghonda	21.79	22.56	15.94	60.29
3	Seelam Pur		10.08	21.39	31.47
4	Dwarkapuri			15.46	15.46
5	Nandnagri	20.16		16.35	36.51
6	Yamuna Vihar			14.40	14.40
7	East of Loni Road			18.00	18.00
8	Shastri Park			10.90	10.90
9	Karawal Nagar			5.40	5.40
10	Sonia Vihar			14.70	14.70
		41.95	47.04	150.64	239.63
12	Geeta Colony				
1	Geeta Colony			10.49	10.49
2	Kanti Nagar			18.10	18.10
3	Kailash Nagar			15.48	15.48
4	Seelam Pur				0.00
5	Shakar Pur			10.80	10.80
		0.00	0.00	54.87	54.87
13	Gazipur S/stn	40.00		5.04	45.04
1	Dallupura	28.80		10.90	39.70
2	Vivek Vihar			9.57	9.57
3	GT Road			10.85	10.85
4	Kondli	20.16		10.85	31.01
5	MVR-I			10.90	10.90
6	MVR-II	20.16		10.44	30.60
7	PPG Ind. Area			10.06	10.06
		109.12	0.00	78.61	187.73
14	Patparganj S/stn	40.00	20.00	5.04	65.04
1	GH-I	19.89		10.45	30.34
2	GH-II	20.09		10.90	30.99
3	CBD		10.03	15.48	25.51
4	Guru Angad Nagar			15.49	15.49
5	Karkadooma		10.80	10.44	21.24
6	Preet Vihar			10.07	10.07
7	CBD-II			10.80	10.80
8	Shakarpur				0.00
9	Jhilmil			10.80	10.80
10	Dilshad Garden	20.16		16.35	36.51
11	Khichripur	21.79		15.89	37.68
12	Mother Dairy				0.00
13	Scope Building				0.00
14	Vivek Vihar				0.00
15	Akhardham			14.60	14.60
		121.93	40.83	146.31	309.07
15	Najafgarh S/stn	60.00		5.04	65.04
1	A4 Paschim Vihar			10.80	10.80
2	Nangloi	21.73		15.84	37.57
3	Nangloi W/W	20.89		10.85	31.74
4	Pankha Road			15.88	15.88
5	Jaffarpur			15.43	15.43
7	Inst. Area Janakpuri (Sagarpur)			17.60	17.60
8	Paschimpuri		10.05	15.47	25.52
9	Paschim Vihar	41.83		15.43	57.26
10	Mukherjee Park			20.83	20.83
11	Udyog Nagar			10.43	10.43
12	Choukhandi			10.07	10.07
13	DJB Najafgarh			21.60	21.60
		144.45	10.05	185.27	339.77

Sl. No	SUB-STATION	INSTALLED CAPACITY			
		66KV	33kV	11kV	TOTAL
16	Pappankalan-I S/stn	20.00		5.04	25.04
1	Bindapur Grid G-3 PPK	21.73		15.85	37.58
2	Bodella-I	20.10		16.24	36.34
3	Bodella-II	21.73		17.64	39.37
4	DC Janakpuri			10.03	10.03
5	G-2 PPK (Nasirpur)			10.80	10.80
6	G-5 PPK (Matiala)			15.51	15.51
7	G-6 PPK			5.40	5.40
8	G-15 PPK			10.80	10.80
9	Harinagar	21.18		16.25	37.43
10	Rewari line			5.44	5.44
		104.74	0.00	129.00	233.74
17	BBMB Rohtak Road				
1	S.B. Mill			10.07	10.07
2	Rama Road			10.88	10.88
3	Ram Pura			10.48	10.48
4	Rohtak Road			10.08	10.08
5	Vishal			10.40	10.40
6	Madipur			10.43	10.43
7	Sudershan Park			10.08	10.08
8	Kirti Nagar			5.44	5.44
		0.00	0.00	77.86	77.86
18	Shalimarbagh S/stn		40.00	6.00	46.00
1	S.G.T. Nagar			5.44	5.44
2	Ashok Vihar			0.00	0.00
3	Haiderpur			11.39	11.39
4	SMB FC			12.64	12.64
5	Rani Bagh			5.44	5.44
6	SMB KHOSLA			5.44	5.44
		0.00	40.00	46.35	86.35
19	Subzimandi S/stn			6.00	6.00
1	Shakti Nagar			5.04	5.04
2	Gulabibagh			10.88	10.88
3	Shahzadabagh			15.79	15.79
4	DU			5.44	5.44
5	Tripolia			10.88	10.88
6	B. G. Road			5.40	5.40
		0.00	0.00	59.43	59.43
20	Narela S/stn	40.00		5.04	45.04
1	A-7 Narela			10.88	10.88
2	Azad Pur			5.44	5.44
3	Badli	20.00		5.95	25.95
4	DSIDC Narela-1			5.95	5.95
5	GTK			5.94	5.94
6	Jahangirpuri	20.00	10.00	0.00	30.00
7	Bhalswa			12.64	12.64
8	Pitampura-I	20.00		5.04	25.04
9	RG-1			5.44	5.44
		100.00	10.00	62.32	172.32

Sl. No	SUB-STATION	INSTALLED CAPACITY			
		66KV	33kV	11kV	TOTAL
21	Gopalpur S/stn		30.00	5.04	35.04
1	Hudson Lane			5.95	5.95
2	Wazirabad			7.20	7.20
3	Indra Vihar			5.95	5.95
4	DIFR			5.44	5.44
5	GTK Road			5.44	5.44
6	Jahangirpuri		10.00	5.95	15.95
7	Civil lines			7.20	7.20
8	Pitam Pura-3			5.44	5.44
9	SGT Nagar			5.95	5.95
10	Tiggipur			10.88	10.88
11	Model Town			14.40	14.40
12	Azad Pur			5.44	5.44
		0.00	40.00	90.28	130.28
22	Rohini S/stn	40.00		6.00	46.00
1	Rohini Sec-22			18.08	18.08
2	Rohini Sec-24			5.44	5.44
3	Rohini-3			5.95	5.95
4	Rohini-4			11.39	11.39
5	Rohini-5			11.39	11.39
6	Rohini-6			0.00	0.00
7	Mangolpuri-2	20.00		7.20	27.20
8	Pitam Pura-1			5.44	5.44
9	Pitam Pura-2			10.48	10.48
10	Rohini DC-1			14.40	14.40
11	AIR Kham pur			11.90	11.90
		60.00	0.00	107.67	167.67
23	Kanjhawala S/stn	20.00		5.04	25.04
1	Bawana Clear Water			14.30	14.30
2	Pooth Khoord	20.00		5.44	25.44
4	Rohini -2			13.15	13.15
		40.00	0.00	37.93	77.93
24	BAWANA S/stn				
1	Bawana S/stn No. 6			10.88	10.88
2	Bawana S/stn No. 7			7.20	7.20
		0.00	0.00	18.08	18.08
25	Kashmeregate S/stn			5.04	5.04
1	Civil lines			7.20	7.20
2	Town Hall			8.64	8.64
3	Fountain			5.45	5.45
		0.00	0.00	26.33	26.33
26	Pappankalan-II				
1	DMRC				0.00
2	HASTAL			21.60	21.60
3	GGSH			10.80	10.80
		0.00	0.00	32.40	32.40
27	Trauma Center (AIIMS)				
1	AIIMS		13.26	5.04	18.30
2	Trauma Center			10.08	10.08
3	Netaji Nagar			15.12	15.12
4	Sanjay Camp			10.08	10.08
5	Kidwai Nagar			10.08	10.08
6	SJ Airport			5.04	5.04
7	Race Course			10.44	10.44
		0.00	13.26	65.88	79.14

Sl. No	SUB-STATION	INSTALLED CAPACITY			
		66KV	33kV	11kV	TOTAL
28	MUNDKA				
1	Mangolpuri-I			20.35	20.35
2	Rohini Sec-23	20.00		12.64	32.64
3	66kV Mundka			21.60	21.60
		20.00	0.00	54.59	74.59
29	DSIDC BAWANA				
1	DSIDC NRL-1	20.00			20.00
2	DSIDC NRL-2			16.32	16.32
3	Bawana Clear Water			7.30	7.30
4	Bawana-1			14.40	14.40
		20.00	0.00	38.02	58.02
30	RIDGE VALLEY				
1	Keventry Diary			10.08	10.08
2	Nehru Park			5.04	5.04
3	State Guest House			5.40	5.40
4	Bapu Dham			15.48	15.48
		0.00	0.00	36.00	36.00
31	IP EXTN (PRAGATI)				
1	Vidyut Bhawan			10.08	10.08
2	Dalhousie Road			5.04	5.04
3	National Archives			10.08	10.08
4	School Lane			10.44	10.44
		0.00	0.00	35.64	35.64
32	Wazirpur				
1	Tri Nagar			10.88	10.88
2	Wazirpur-1			17.18	17.18
3	Wazirpur-2			13.20	13.20
4	Ashok vihar			17.80	17.80
5	Azad Pur			5.44	5.44
6	GTK			4.80	4.80
		0.00	0.00	69.30	69.30
33	Peeragarhi				
1	Rani Bagh			5.44	5.44
2	Rani Bagh cc			9.60	9.60
		0.00	0.00	15.04	15.04
34	Rohini-II				
1	Rohini-6			13.15	13.15
		0.00	0.00	13.15	13.15

Utility	HT	LT	Total
BYPL	901.18	102.00	1003.18
BRPL	1264.49	242.00	1506.49
TPDDL	820.34	119.00	939.34
NDMC	253.74	24.00	277.74
DTL	753.52	0.00	753.52
IPGCL (RPH)	20.00	0.00	20.00
MES	20.10	0.00	20.10
TOTAL	4033.37	487.00	4520.37

20 DETAILS OF BREAK-DOWNS DURING THE MONTH OF OCTOBER 2016

SL NO	OCCURRENCE OF BREAK-DOWN		DETAILS OF THE BREAKDOWN	TIME OF RESTORATION		REMARKS
	DATE	TIME		DATE	TIME	
1	2.10.16	12:08	MASJID MOTH 220/33kv 100MVA Tx-II	2.10.16	12:52	I/C TRIPPED ON O/C E/F, 86.
2	2.10.16	15:25	220kv OKHLA - BTPS CKT. - II	2.10.16	15:35	AT BTPS CKT. TRIPPED ON DIST PROT, ZONE - I, DIST 3.0KM, B PHASE E/F.
3	2.10.16	18:10	MASJID MOTH 220/33kv 100MVA Tx-I	2.10.16	22:10	33KV I/C TRIPPED ON ON DIRECTIONAL O/C, E/F, MASTER RELAY 86.
4	3.10.16	10:45	MASJID MOTH 220/33kv 100MVA Tx-I	3.10.16	13:10	33KV I/C-I TRIPPEDON O/C, E/F, 86.
5	3.10.16	13:12	220kv MEHRAULI - VASANT KUNJ CKT.- II	3.10.16	16:45	AT MEHRAULI CKT. TRIPPED ON DIST PROT, ZONE-II, B PHASE. AT VASANT KUNJ CKT. TRIPPED ON R PHASE, 186.
6	3.10.16	13:40	MASJID MOTH 220/33kv 100MVA Tx-I	3.10.16	17:50	I/C TRIPPED ON O/C, E/F.
7	3.10.16	16:15	220kv WAZIRABAD - KASHMERE GATE CKT-I	3.10.16	18:38	AT WAZIRABAD CKT. TRIPPED ON DIST PROT, ZONE-I, DIST 1.785KM.
8	4.10.16	09:10	INDRAPRASTHA POWER 220/33kv 100MVA Tx-II	4.10.16	09:22	TR. TRIPPED ON B PHASE, O/C, 51B., R PHASE. 33KV I/C TRIPPED ON O/C, R PHASE.
9	4.10.16	12:25	PRAGATI 220/66kv 160MVA Tx-I	4.10.16	16:54	TR. TRIPPED ON OLTC, SPR TRIP, 30A, 30D, BUCHHOLZ TRIP.
10	6.10.16	13:54	220kv MEHRAULI - VASANT KUNJ CKT.- II	6.10.16	14:13	AT MEHRAULI CKT. TRIPPED ON DIST PROT, ZONE-II, R PHASE TRIP. AT VASANT KUNJ CKT. WAS IN OFF POSITION.
11	6.10.16	14:34	220KVBAWANA- ROHINI CKT-II	6.10.16	18:41	AT BAWANA CKT. TRIPPED ON DIST PROT, ZONE-II, DIST 10.18KM, R PHASE,186A&B. AT ROHINI CKT. DID NOT TRIP.
12	7.10.16	11:10	220kv MEHRAULI - VASANT KUNJ CKT.- II	7.10.16	17:36	AT MEHRAULI CKT. TRIPPED ON DIST PROT, ZONE-I, DIST 4.281KM, AT VASANT KUNJ CKT. DID NOT TRIP.
13	7.10.16	11:18	220kv OKHLA - BTPS CKT. - II	7.10.16	11:26	AT BTPS CKT. TRIPPED ON DIST PROT. ZONE-I, DIST 5.2KM. AT OKHLA CKT. DID NOT TRIP.
14	7.10.16	11:47	220 KV PATPARGANJ - I.P. CKT-II	7.10.16	12:01	AT I.P. CKT. TRIPPED ON DIST PROT, ZONE-II, ABC PHASE, 86, 186. AT PATPARGANJ CKT. TRIPPED ON 186.
15	7.10.16	12:02	220KV BAWANA-SHALIMARBAGH CKT-II	7.10.16	12:41	AT BAWANA CKT. TRIPPED ON DIST PROT, ZONE-II, DIST 8.891KM. AT SHALIMARBAGH CKT. DID NOT TRIP.
16	7.10.16	13:14	220kv DIAL- MEHRAULI CKT-I	7.10.16	13:24	AT MEHRAULI CKT. TRIPPED ON DIST PROT, ZONE-I, II, III. AT DIAL CKT. DID NOT TRIP.
17	7.10.16	13:36	220kv MEHRAULI - BTPS CKT. - I	7.10.16	14:08	AT MEHRAULI CKT .TRIPPED ON 186, DIST PROT, ZONE-I, DIST 9.651KM. AT BTPS CKT. TRIPPED ON DIST PROT, ZONE-I, DIST 14.3KM, B PHASE.
18	8.10.16	02:32	220kv BAWANA - KANJHAWALA CKT - 1	8.10.16	03:07	AT BAWANA CKT. TRIPPED ON DIST PROT, DIST 10.5KM. AT KHANJAWALA CKT. TRIPPED ON DIST PROT, ZONE-II.
19	8.10.16	08:16	220 KV PATPARGANJ - I.P. CKT-II	8.10.16	13:30	AT I.P. CKT. TRIPPED NO 186, 86X,DIRECTIONAL EARTH FAULT. AT PAPPARGANJ CKT. DID NO TRIP, CVT AVAILABLE AT I.P.
20	8.10.16	13:05	220kv GAZIPUR - BTPS CKT	8.10.16	18:07	AT BTPS CKT. TRIPPED ON DIST PROT, ZONE-I, DIST 0.37KM, R PHASE.
21	8.10.16	13:25	220kv SARITA VIHAR - BTPS CKT.-I	8.10.16	14:02	At Sarita Vihar : Tripped on 186 A &B. At BTPS : B-Ph ,E/F ,Dist.Prot. ,Dist-6 Km .

SL NO	OCCURRENCE OF BREAK-DOWN		DETAILS OF THE BREAKDOWN	TIME OF RESTORATION		REMARKS
	DATE	TIME		DATE	TIME	
22	8.10.16	13:26	220kV SARITA VIHAR - BTPS CKT.-II	8.10.16	19:15	At Sarita Vihar : Ckt did not trip. At BTPS : Ckt manually made Off .
23	8.10.16	23:26	220kV MUNDKA-NAJAFGARH CKT	9.10.16	00:22	AT MUNDKA CKT. TRIPPED ON 86A,R,Y PHAES.
24	9.10.16	12:27	220kV MUNDKA-KANJHAWALA CKT	9.10.16	12:47	AT KHANJAWALA CKT. TRIPPED ON ABC PHASE. AT MUNDKA CKT. TRIPPED ON DIST PROT, ZONE-I, POLE DISCREPANCY.
25	9.10.16	12:28	220kV DIAL- MEHRAULI CKT-II	9.10.16	13:51	AT MEHRAULI CKT. TRIPPED ON DIST PROT, ZONE-3, DIST 7.55KM, 186. AT DIAL CKT. TRIPPED ON DIST PROT, ZONE-I, MAIN-1.
26	9.10.16	12:50	220kV MUNDKA-KANJHAWALA CKT	9.10.16	16:17	AT MUNDKA CKT. TRIPPED ON DIST PROT, ZONE-II, DISTANCE 15.3KM. AT KHANJAWALA CKT. DID NOT TRIPPED.
27	9.10.16	14:16	MASJID MOTH 220/33kV 100MVA Tx-II	9.10.16	18:55	TR. TRIPPED ON DIFFERENTIAL, O/C, E/F.
28	14.10.16	11:12	220kV MUNDKA-KANJHAWALA CKT	14.10.16	11:56	AT MUNDKA CKT. TRIPPED ON DIST PROT, ZONE-I, DIST 14.93KM. AT KHANJAWALA CKT. DID NOT TRIP.
29	15.10.16	07:05	SHALIMAR BAGH 220/33kV 100MVA Tx-III	15.10.16	16:05	TR. TRIPPED ON O/C, E/F, 86.
30	19.10.16	07:40	VASANT KUNJ 66/11kV, 20MVA Tx-I	19.10.16	10:50	TR. TRIPPED ON 30D, OLTC, 86, TROUBLE ALARM.
31	19.10.16	16:25	VASANT KUNJ 66/11kV, 20MVA Tx-I	19.10.16	19:35	TR. PUT OFF DUE TO FIRE.
32	19.10.16	16:48	WAZIRPUR 220/33kV 100MVA Tx-I	20.10.16	18:04	TR. TRIPPED ON TROUBLE ALARM, DIFFERENTIAL RELAY, B PHASE, GROUP A, 86A, 86B, BUCHHOLZ.
33	19.10.16	20:42	220kV KANJHAWALA-NAJAFGARH CKT	19.10.16	21:55	AT KHANJAWALA CKT. TRIPPED ON DIST PROT, ZONE-II, R&B PHASE. AT NAJAFGARH CKT. DID NOT TRIP.
34	19.10.16	20:42	220kV BAMNAULI-NAJAFGARH CKT-I	19.10.16	23:17	AT BAMNAULI CKT. TRIPPED ON 186A&B, DIST PROT, ZONE-I, DIST 5.529KM. AT NAJAFGARH CKT. TRIPPED ON DIST PROT, ZONE-I, R PHASE, 186.
35	19.10.16	20:42	400kV Ballabgarh-Bamnauli Ckt-II	19.10.16	21:29	AT BAMNAULI CKT. TRIPPED ON 186, A&B PHASE, DIST PROT, ZONE-I.
36	20.10.16	10:57	MEHRAULI 66/11kV, 20MVA Tx-II	20.10.16	12:49	TR. TRIPPED ON DIFFERENTIAL PROTECTION AND 86 & 95C.
37	20.10.16	12:59	HARSH VIHAR 220/66KV 160MVA ICT-3	20.10.16	13:22	66KV I/C-III TRIPPED ON 86.
38	20.10.16	12:59	HARSH VIHAR 220/66KV 160MVA ICT-2	20.10.16	13:22	66KV I/C-II TRIPPED ON 86.
39	22.10.16	13:05	220kV MEHRAULI - BTPS CKT. - II	22.10.16	14:40	AT MEHRAULI CKT. TRIPPED ON DIST PROT, ZONE-I, DIST 13.63KM. AT BTPS CKT. TRIPPED ON DIST PROT, ZONE-I, DIST 3.4KM.
40	22.10.16	16:10	GAZIPUR 66/11kV, 20MVA Tx-II	22.10.16	18:47	TR. TRIPPED ON 86, DIFFERENTIAL B PHASE.
41	24.10.16	21:45	220kV PRAGATI - SARITA VIHAR CKT - I	24.10.16	22:50	AT SARITA VIHAR CKT. TRIPPED ON DIST PROT, ZONE-I, DIST 3.13KM, 186A, 186B. AT PRAGATI CKT. TRIPPED ON DIST PROT, ZONE-I, DIST 8.420KM.

SL NO	OCCURRENCE OF BREAK-DOWN		DETAILS OF THE BREAKDOWN	TIME OF RESTORATION		REMARKS
	DATE	TIME		DATE	TIME	
42	24.10.16	23:58	NARELA 220/66kV 100MVA Tx-II	25.10.16	07:15	66kV I/C-II TRIPPED WITHOUT INDICATION.
43	25.10.16	16:16	SHALIMAR BAGH 220/33kV 100MVA Tx-III	25.10.16	16:24	TR. TRIPPED ON 96.
44	29.10.16	12:05	220kV DIAL- MEHRAULI CKT-II	29.10.16	14:15	AT MEHRAULI CKT .TRIPPED ON ACTIVE GROUP -I, TRIP PHASE ABC. CKT. DID NOT TRIP AT DIAL.
45	29.10.16	12:05	220kV DIAL- MEHRAULI CKT-I	29.10.16	14:15	AT MEHRAULI CKT. TRIPPED ON 64BX. AT DIAL CKT. DID NOT TRIPPED.
46	29.10.16	12:06	400kV Ballabgarh-Bamnauli Ckt-I	29.10.16	14:03	At Bamnauli: CB 252 is in Lock Out position. At Ballabgarh : Manually made off to arrange shutdown.
47	29.10.16	12:06	400kV Ballabgarh-Bamnauli Ckt-II	29.10.16	12:48	At Bamnauli: 85LO , 186 A , 186 B and ckt Inter-tripped. At Ballabgarh :LBB ,O/c and E/f.
48	29.10.16	12:12	220kV MUNDKA-NAJAFGARH CKT	29.10.16	13:02	AT MUNDKA CKT. TRIPPED ON 86 A&B. AT NAJAFGARH CKT. DID NOT TRIP.

20 DETAILS OF UNDER FREQUENCY RELAY OPERATIONS IN DELHI POWER SYSTEM DURING THE MONTH OF OCTOBER 2016

DATE	S. N.	TIME		Name of Grid	NAME OF AFFECTED FEEDERS	MODE	LOAD RELIEF IN MW
		OUT	IN				
				NIL			